

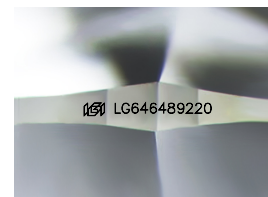
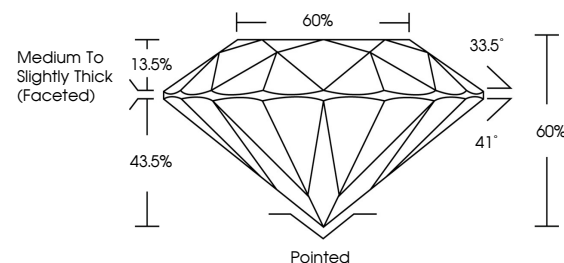


**ELECTRONIC COPY**

## LABORATORY GROWN DIAMOND REPORT

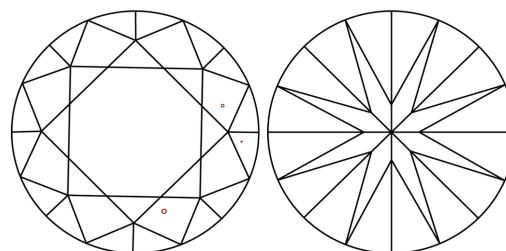
LG646489220  
Report verification at [iqi.org](https://iqi.org)

## PROPORTIONS



Sample Image Used

## CLARITY CHARACTERISTICS



## KEY TO SYMBOLS

Red symbols indicate internal characteristics.  
Green symbols indicate external characteristics.

## COLOR

D E F G H I J Faint Very Light Light

## CLARITY

| IF                  | VVS <sup>1-2</sup>          | VS <sup>1-2</sup>      | SI <sup>1-2</sup> | I <sup>1-3</sup> |
|---------------------|-----------------------------|------------------------|-------------------|------------------|
| Internally Flawless | Very Very Slightly Included | Very Slightly Included | Slightly Included | Included         |



© IGI 2020, International Gemological Institute

FD - 10 20

**www.igi.org**

## LABORATORY GROWN DIAMOND REPORT



August 6, 2024

IGI Report Number **LG646489220**Description **LABORATORY GROWN DIAMOND**Shape and Cutting Style **ROUND BRILLIANT**

|              |                       |
|--------------|-----------------------|
| Measurements | 9.29 - 9.31 X 5.58 MM |
|--------------|-----------------------|

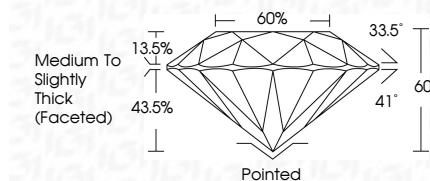
## GRADING RESULTS

Carat Weight **2.96 CARATS**

Color Grade

Clarity Grade VS 2

Cut Grade **IDEAL**



### ADDITIONAL GRADING INFORMATION

Polish EXCELLENCE

Symmetry **EXCELLENCE**

Fluorescence NON

Inscription(s)  LG64648922

Comments: This Laboratory Grown Diamond was created by Chemical Vapor Deposition (CVD) growth process.  
Type IIa



|                       |   |                                    |
|-----------------------|---|------------------------------------|
| August 6, 2024        | GI Report No. LG54489220  | 2.96 CARATS                        |
| ROUND BRILLIANT       |   |                                    |
| 2.25 - 9.31 X 5.68 MM |   |                                    |
| Color Weight          | Color Grade   | VS 2                               |
|                       | Clarity Grade   | IDEAL                              |
|                       | Cut Grade   | 60%                                |
|                       | Depth   | 60%                                |
|                       | Table   | Medium to Slightly Thick (Faceted) |
|                       | Girdle  |                                    |
|                       | Culet   | Pointed                            |
|                       | Polish  | EXCELLENT                          |
|                       | Symmetry  | EXCELLENT                          |
|                       | Fluorescence  | NONE                               |
|                       | Inscriptions(s)   | lg9 LG54489220                     |
| Comments:             | The Laboratory Crown Diamond was<br>examined and found to be a natural<br>CVD growth process.<br>Type Iia |                                    |