

INTERNATIONAL
GEMOLOGICAL
INSTITUTE

ELECTRONIC COPY

LABORATORY GROWN DIAMOND REPORT

August 7, 2024

IGI Report Number

LG646489061

Description

LABORATORY GROWN DIAMOND

Shape and Cutting Style

CUT CORNERED RECTANGULAR MODIFIED BRILLIANT

Measurements

10.31 X 7.07 X 4.83 MM

GRADING RESULTS

Carat Weight

3.09 CARATS

Color Grade

E

Clarity Grade

VVS 2

ADDITIONAL GRADING INFORMATION

Polish

EXCELLENT


Symmetry

EXCELLENT

Fluorescence

NONE

Inscription(s)

 LG646489061

Comments: This Laboratory Grown Diamond was created by Chemical Vapor Deposition (CVD) growth process.
Type IIa

LABORATORY GROWN DIAMOND REPORT

August 7, 2024

IGI Report Number

LG646489061

Description

LABORATORY GROWN DIAMOND

Shape and Cutting Style

CUT CORNERED RECTANGULAR MODIFIED BRILLIANT

Measurements

10.31 X 7.07 X 4.83 MM

GRADING RESULTS

Carat Weight

3.09 CARATS

Color Grade

E

Clarity Grade

VVS 2

ADDITIONAL GRADING INFORMATION

Polish

EXCELLENT

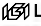
Symmetry

EXCELLENT

Fluorescence

NONE

Inscription(s)

 LG646489061

Comments: This Laboratory Grown Diamond was created by Chemical Vapor Deposition (CVD) growth process.
Type IIa

LABORATORY GROWN DIAMOND REPORT

August 7, 2024

IGI Report No LG646489061

CUT CORNERED RECT. MODIFIED BRILLIANT

10.31 X 7.07 X 4.83 MM

Carat Weight

3.09 CARATS

Color Grade

E

Clarity Grade

VVS 2

Depth

68.3%

Table

67%

Girdle

Slightly Thick

Culet

Pointed

Polish

EXCELLENT


Symmetry

EXCELLENT

Fluorescence

NONE

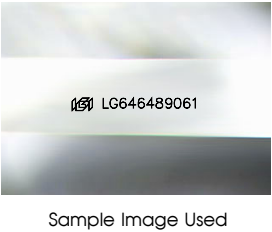
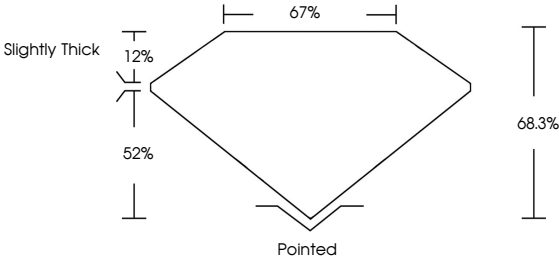
Inscription(s)

 LG646489061

Comments: The Laboratory Grown Diamond was created by Chemical Vapor Deposition (CVD) growth process.
Type IIa

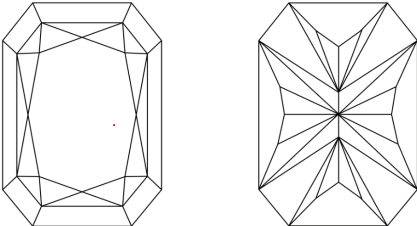
LG646489061
Report verification at [igi.org](https://www.igi.org)

PROPORTIONS



Sample Image Used

CLARITY CHARACTERISTICS



KEY TO SYMBOLS

Red symbols indicate internal characteristics.
Green symbols indicate external characteristics.

COLOR

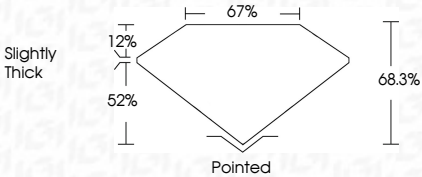
D E F G H I J Faint Very Light Light

CLARITY

IF	VVS ¹⁻²	VS ¹⁻²	SI ¹⁻²	I ¹⁻³
Internally Flawless	Very Very Slightly Included	Very Slightly Included	Slightly Included	Included



August 7, 2024
IGI Report Number LG646489061
Description LABORATORY GROWN DIAMOND
Shape and Cutting Style CUT CORNERED RECTANGULAR MODIFIED BRILLIANT
Measurements 10.31 X 7.07 X 4.83 MM
GRADING RESULTS
Carat Weight 3.09 CARATS
Color Grade E
Clarity Grade VVS 2



ADDITIONAL GRADING INFORMATION

Polish EXCELLENT
Symmetry EXCELLENT
Fluorescence NONE
Inscription(s)  LG646489061
Comments: This Laboratory Grown Diamond was created by Chemical Vapor Deposition (CVD) growth process.
Type IIa



IGI

August 7, 2024
IGI Report No LG646489061
CUT CORNERED RECT. MODIFIED BRILLIANT
10.31 X 7.07 X 4.83 MM
Carat Weight 3.09 CARATS
Color Grade E
Clarity Grade VVS 2
Depth 68.3%
Table 67%
Girdle Slightly Thick
Culet Pointed
Polish EXCELLENT
Symmetry EXCELLENT
Fluorescence NONE
Inscription(s)  LG646489061
Comments: The Laboratory Grown Diamond was created by Chemical Vapor Deposition (CVD) growth process.
Type IIa