

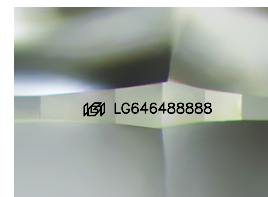
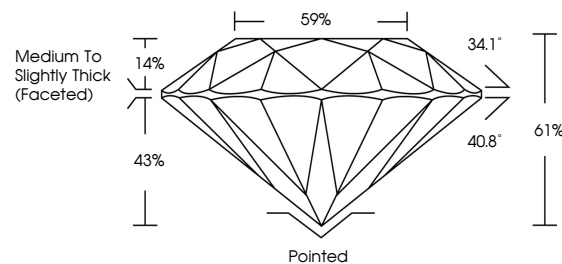


**ELECTRONIC COPY**

## LABORATORY GROWN DIAMOND REPORT

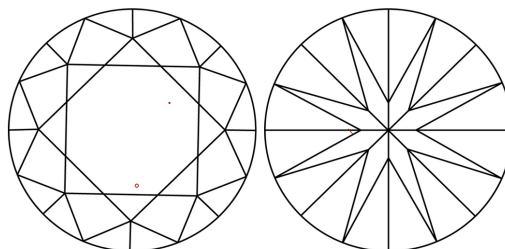
LG646488888  
Report verification at [igi.org](https://igi.org)

## PROPORTIONS



Sample Image Used

## CLARITY CHARACTERISTICS



### KEY TO SYMBOLS

Red symbols indicate internal characteristics.  
Green symbols indicate external characteristics.

## COLOR

D E F G H I J Faint Very Light Light

## CLARITY

IF	VVS <sup>1-2</sup>	VS <sup>1-2</sup>	SI <sup>1-2</sup>	I <sup>1-3</sup>
Internally Flawless	Very Very Slightly Included	Very Slightly Included	Slightly Included	Included



© IGI 2020, International Gemological Institute

FD - 10 20

**www.igi.org**

## LABORATORY GROWN DIAMOND REPORT



August 7, 2024

IGI Report Number **LG646488888**Description **LABORATORY GROWN DIAMOND**Shape and Cutting Style **ROUND BRILLIANT**

Measurements 8.00 - 8.05 X 4.90 MM

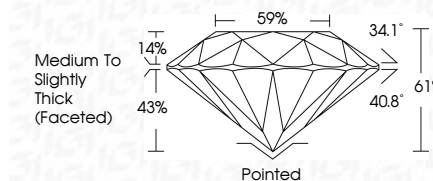
## GRADING RESULTS

Carat Weight 1.94 CARAT

Color Grade

Clarity Grade VS 2

Cut Grade **IDEAL**



### ADDITIONAL GRADING INFORMATION

Polish **EXCELLENT**Symmetry **EXCELLENT**Fluorescence NONEInscription(s)  LG646488888

Comments: This Laboratory Grown Diamond was created by Chemical Vapor Deposition (CVD) growth process.  
Type IIa



August 7, 2024	G Report No. LG5448898		1.94 CARAT		F	
ROUND BRILLIANT	0.00 - 0.05 X 4.90 MM	Color Weight	Clarity Grade	Vs2	ID5AL	0.1%
		Color Grade	Cut Grade	0.1%		59%
			Depth	Medium to Slightly Thick (Faceted)		
			Table			
			Girdle			
		Culet	Pointed			
		Polish	EXCELLENT			
		Symmetry	EXCELLENT			
		Fluorescence	NONE			
		Inscriptions (s)	lg5448898			
Comments:			The Laboratory Crown Diamond was CVD natural origin Deposition CVD growth process. Type Iia			