

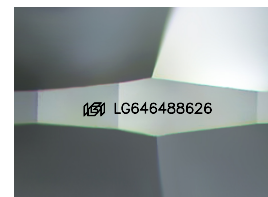
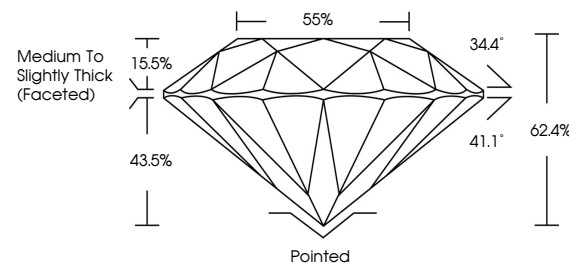


ELECTRONIC COPY

LABORATORY GROWN DIAMOND REPORT

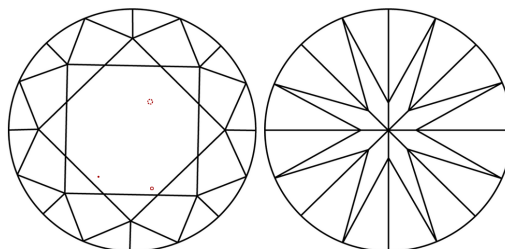
LG646488626
Report verification at igi.org

PROPORTIONS



Sample Image Used

CLARITY CHARACTERISTICS



KEY TO SYMBOLS

Red symbols indicate internal characteristics.
Green symbols indicate external characteristics.

COLOR

D E F G H I J Faint Very Light Light

CLARITY

IF	VVS ¹⁻²	VS ¹⁻²	SI ¹⁻²	I ¹⁻³
Internally Flawless	Very Very Slightly Included	Very Slightly Included	Slightly Included	Included



© IGI 2020, International Gemological Institute

FD - 10 20

www.igi.org

LABORATORY GROWN DIAMOND REPORT



August 6, 2024

IGI Report Number **LG646488626**Description **LABORATORY GROWN DIAMOND**Shape and Cutting Style **ROUND BRILLIANT**

Measurements 7.26 - 7.31 X 4.55 MM

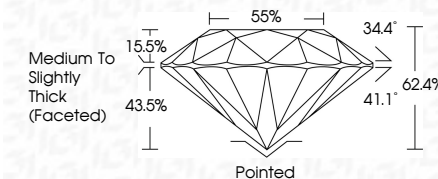
GRADING RESULTS

Carat Weight 1.47 CARAT

Color Grade

Clarity Grade VS 1

Cut Grade **IDEAL**



ADDITIONAL GRADING INFORMATION

Polish **EXCELLENT**Symmetry **EXCELLENT**Fluorescence **NONE**Inscription(s) LG646488626

Comments: This Laboratory Grown Diamond was created by Chemical Vapor Deposition (CVD) growth process.
Type IIa



August 6, 2024	1.47 CARAT	Vs 1	Medium to Slightly Thick (Faceted)	Painted	NONE	#81 G544489205	Comments: This Laboratory Grown Diamond was created by Chemical Vapor Deposition (CVD) growth process. Type IIa
GI Report No. G544489205	Color Grade	IDEAL		EXCELLENT			
ROUND BRILLIANT	Clarity Grade	62.4%		EXCELLENT			
28- 7.31 X 4.55 MM	Cut Grade	85%					
	Depth						
	Table			Symmetry			
	Girdle			Fluorescence			
				Proportion(s)			