

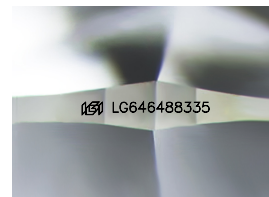
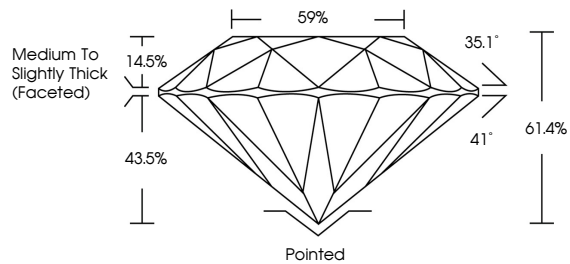


**INTERNATIONAL  
GEMOLOGICAL  
INSTITUTE**

**ELECTRONIC COPY**

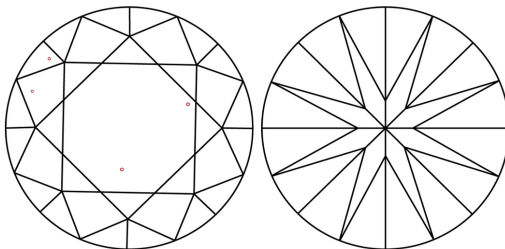
LG646488335  
Report verification at [igi.org](https://www.igi.org)

## PROPORTIONS



Sample Image Used

## CLARITY CHARACTERISTICS



## KEY TO SYMBOLS

Red symbols indicate internal characteristics.  
Green symbols indicate external characteristics.

## COLOR

D E F G H I J Faint Very Light Light

## CLARITY

IF	WVS <sup>1-2</sup>	VS <sup>1-2</sup>	SI <sup>1-2</sup>	I <sup>1-3</sup>
Internally Flawless	Very Very Slightly Included	Very Slightly Included	Slightly Included	Included



© IGI 2020, International Gemological Institute

FD - 10 20

**www.igi.org**

LABORATORY GROWN DIAMOND REPORT



August 6, 2024

IGI Report Number **LG646488335**

Description	LABORATORY GROWN DIAMOND
-------------	--------------------------

Shape and Cutting Style **ROUND BRILLIANT**

Measurements	8.05 - 8.03 X 4.93 MM
--------------	-----------------------

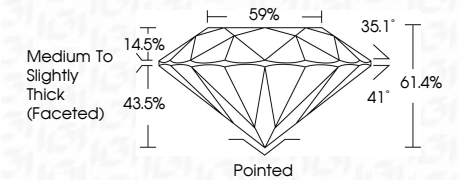
## GRADING RESULTS

Carat Weight **1.96 CARAT**

Color Grade	F
-------------	---

Clarity Grade **VS 1**

Cut Grade **IDEAL**



### ADDITIONAL GRADING INFORMATION

Polish **EXCELLENT**Symmetry **EXCELLENT**Fluorescence **NONE**Inscription(s) **151** LG646488335

Comments: This Laboratory Grown Diamond was created by Chemical Vapor Deposition (CVD) growth process.  
Type IIa



IGI

August 6, 2024	1.96 CARAT
IGI Report No LG56468335	
ROUND BRILLIANT	
68.08 - 8.03 X 4.93 MM	
Carat Weight	
Color Grade	Vs1
Clarity Grade	IDeAL
Cut Grade	61.4%
Depth	59%
Table	Medium to Slightly Thick (raised)
Girdle	Painted
	EXCELLENT
Culet	EXCELLENT
Polish	NONE
Symmetry	
Fluorescence	1691 LG56468335
Inscriptions	
Comments:	
	This Laboratory Grown Diamond was created by Chemical Vapor Deposition (CVD) growth process.
Type IId	