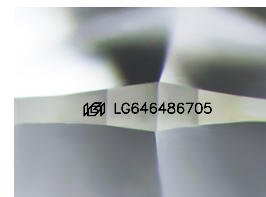
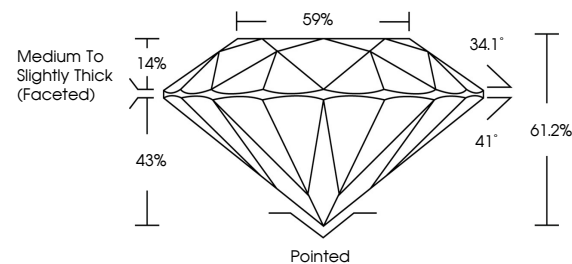


**ELECTRONIC COPY**

## LABORATORY GROWN DIAMOND REPORT

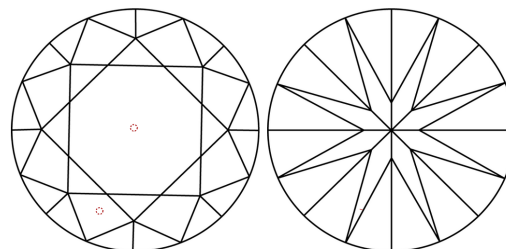
LG646486705  
Report verification at [igi.org](http://igi.org)

## PROPORTIONS



Sample Image Used

## CLARITY CHARACTERISTICS



## KEY TO SYMBOLS

Red symbols indicate internal characteristics.  
Green symbols indicate external characteristics.

## COLOR

D E F G H I J Faint Very Light Light

## CLARITY

IF	VVS <sup>1-2</sup>	VS <sup>1-2</sup>	SI <sup>1-2</sup>	I <sup>1-3</sup>
Internally Flawless	Very Very Slightly Included	Very Slightly Included	Slightly Included	Included



© IGI 2020, International Gemological Institute

FD - 10 20

**www.igi.org**

## LABORATORY GROWN DIAMOND REPORT



August 6, 2024

IGI Report Number **LG646486705**Description **LABORATORY GROWN DIAMOND**Shape and Cutting Style **ROUND BRILLIANT**

Measurements	7.98 - 8.01 X 4.90 MM
--------------	-----------------------

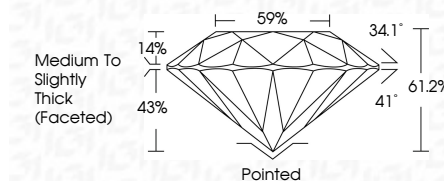
## GRADING RESULTS

Carat Weight 1.96 CARAT

Color Grade F

Clarity Grade VS 1

Cut Grade **IDEAL**



### ADDITIONAL GRADING INFORMATION

Polish **EXCELLENT**Symmetry **EXCELLENT**Fluorescence **NONE**Inscription(s)  LG646486705

Comments: This Laboratory Grown Diamond was created by Chemical Vapor Deposition (CVD) growth process.  
Type IIa



August 6, 2024	1.96 CARAT
GI Report No LG54468705	VSI
ROUND BRILLIANT	IDEAL
	61.2%
	59%
	Medium to Slightly Thick Faceted
	Pointed
	EXCELLENT
	EXCELLENT
	NONE
	#68 LG54468705
	Comments:
	This Laboratory Grown Diamond was created by Chemical Vapor Deposition (CVD) growth process.
	Type IIa