



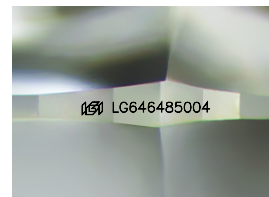
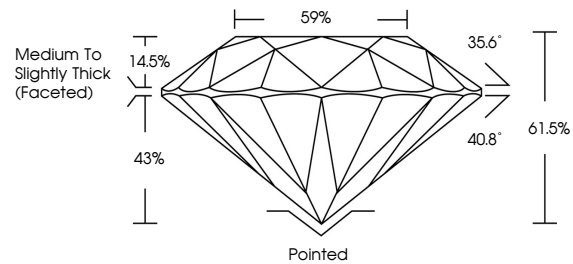
**INTERNATIONAL
GEMOLOGICAL
INSTITUTE**

ELECTRONIC COPY

LABORATORY GROWN DIAMOND REPORT

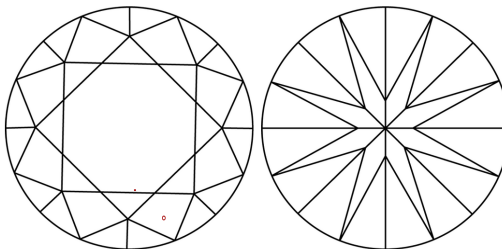
LG646485004
Report verification at [igi.org](https://www.igi.org)

PROPORTIONS



Sample Image Used

CLARITY CHARACTERISTICS



KEY TO SYMBOLS

Red symbols indicate internal characteristics.
Green symbols indicate external characteristics.

COLOR

D E F G H I J Faint Very Light Light

CLARITY

IF	WVS ¹⁻²	VS ¹⁻²	SI ¹⁻²	I ¹⁻³
Internally Flawless	Very Very Slightly Included	Very Slightly Included	Slightly Included	Included



© IGI 2020, International Gemological Institute

FD - 10 20

LABORATORY GROWN DIAMOND REPORT



August 6, 2024

IGI Report Number **LG646485004**

Description	LABORATORY GROWN DIAMOND
-------------	--------------------------

Shape and Cutting Style **ROUND BRILLIANT**

Measurements 9.18 - 9.19 X 5.65 MM

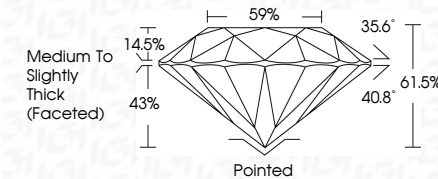
GRADING RESULTS

Carat Weight **2.97 CARATS**

Color Grade	F
-------------	---

Clarity Grade VS 1

Cut Grade **IDEAL**



ADDITIONAL GRADING INFORMATION

Polish **EXCELLENCE**Symmetry **EXCELLENCE**

Fluorescence NONI

Inscription(s) LG64648500

Comments: This Laboratory Grown Diamond was created by Chemical Vapor Deposition (CVD) growth process.
Type IIa



IG

August 6, 2024	
IGI Report No LG54A85004	
ROUND BRILLIANT	
9.18 - 9.19 X 6.65 MM	
Carat Weight	2.97 CARATS
Color Grade	F
Cutty Grade	Vs 1
Cut Grade	IDEAL
Depth	61.5%
Table	89%
Girdle	Medium to Slightly Thick Faceted
Culet	Pointed
Poish	EXCELLENT
Symmetry	EXCELLENT
Fluorescence	NONE
Inscription(s)	#61 LG54A85004
Comments:	
	This Laboratory Grown Diamond was created by Chemical Vapor Deposition (CVD) growth process.
Type Iia	