

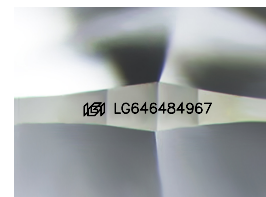
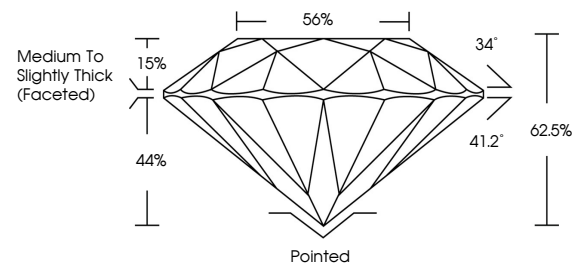


ELECTRONIC COPY

LABORATORY GROWN DIAMOND REPORT

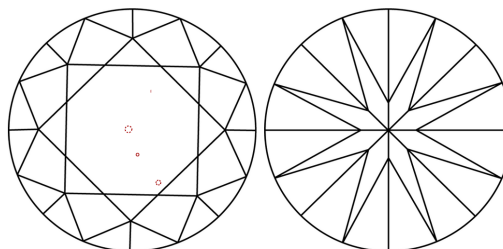
LG646484967
Report verification at igi.org

PROPORTIONS



Sample Image Used

CLARITY CHARACTERISTICS



KEY TO SYMBOLS

Red symbols indicate internal characteristics.
Green symbols indicate external characteristics.

COLOR

D E F G H I J Faint Very Light Light

CLARITY

IF	VVS ¹⁻²	VS ¹⁻²	SI ¹⁻²	I ¹⁻³
Internally Flawless	Very Very Slightly Included	Very Slightly Included	Slightly Included	Included



© IGI 2020, International Gemological Institute

FD - 10 20

www.igi.org

LABORATORY GROWN DIAMOND REPORT



August 6, 2024

IGI Report Number **LG646484967**Description **LABORATORY GROWN DIAMOND**Shape and Cutting Style **ROUND BRILLIANT**

Measurements 6.49 - 6.53 X 4.07 MM

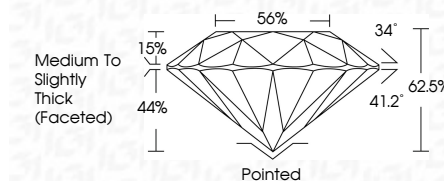
GRADING RESULTS

Carat Weight 1.05 CARAT

Color Grade D

Clarity Grade VS 1

Cut Grade **IDEAL**



ADDITIONAL GRADING INFORMATION

Polish **EXCELLENT**Symmetry **EXCELLENT**Fluorescence **NONE**Inscription(s) LG646484967

Comments: This Laboratory Grown Diamond was created by Chemical Vapor Deposition (CVD) growth process.
Type IIa



August 6, 2024	GI Report No. LG4646907	1.05 CARAT
ROUND BRILLIANT		
Weight: 4.67 - 4.63 X 4.07 MM		
Color Weight		
Color Grade		
Clarity Grade		
Cut Grade		
Depth		
Table		
Girdle		
Culet		
Polish		
Symmetry		
Fluorescence		
Inscriptions(s)		
Comments:		
The Laboratory Crown Diamond was		
certified for natural origin by the		
GDV growth process.		
Type IIA		