

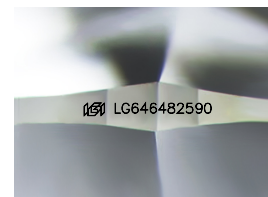
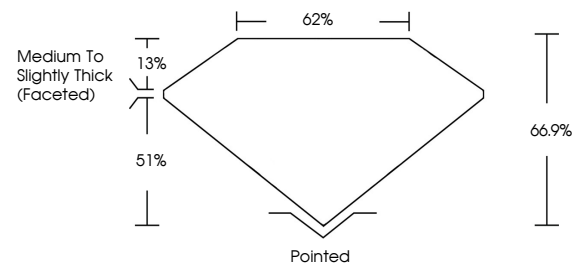


ELECTRONIC COPY

LABORATORY GROWN DIAMOND REPORT

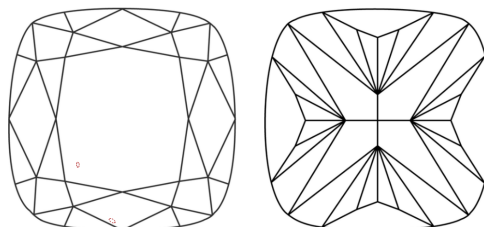
LG646482590
Report verification at igi.org

PROPORTIONS



Sample Image Used

CLARITY CHARACTERISTICS



KEY TO SYMBOLS

Red symbols indicate internal characteristics.
Green symbols indicate external characteristics.

COLOR

D E F G H I J Faint Very Light Light

CLARITY

IF	VVS ¹⁻²	VS ¹⁻²	SI ¹⁻²	I ¹⁻³
Internally Flawless	Very Very Slightly Included	Very Slightly Included	Slightly Included	Included



© IGI 2020, International Gemological Institute

FD - 10 20

www.igi.org

LABORATORY GROWN DIAMOND REPORT



August 6, 2024

IGI Report Number **LG646482590**

Description **LABORATORY GROWN DIAMOND**Shape and Cutting Style **SQUARE CUSHION BRILLIANT**

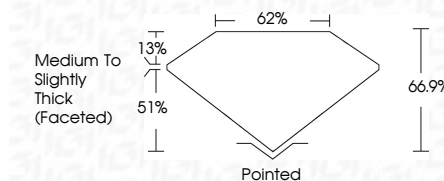
Measurements **7.54 X 7.35 X 4.92 MM**

GRADING RESULTS

Carat Weight **2.09 CARATS**

Color Grade E

Clarity Grade VS 1



ADDITIONAL GRADING INFORMATION

Polish EXCELLENT

Symmetry **EXCELLENT**Fluorescence NONEInscription(s)  LG646482590

Comments: This Laboratory Grown Diamond was created by Chemical Vapor Deposition (CVD) growth process.
Type IIa



August 6, 2024	2.09 CARATS	Vs1	66.9%	62%	Painted	EXCELLENT	EXCELLENT	NONE	1811 G546462590	Comments: This Laboratory Geminal Diamond was created by Chemical Vapor Deposition (CVD) growth process. Type IIa
G1 Report No. G546462590	Color Weight	Clarity Grade	Depth	Table	Medium to Slightly Thick (Peacock)					
SQUARE CUSHION BRILLIANT	Carat Grade									