

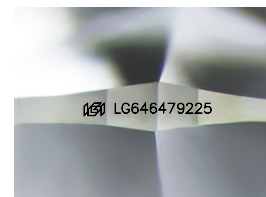
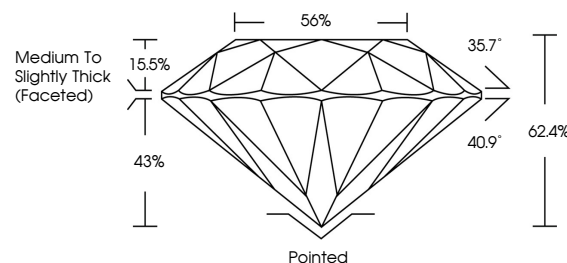


ELECTRONIC COPY

LABORATORY GROWN DIAMOND REPORT

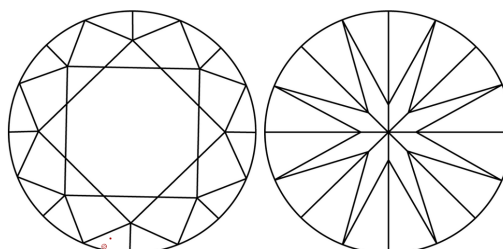
LG646479225
Report verification at igi.org

PROPORTIONS



Sample Image Used

CLARITY CHARACTERISTICS



KEY TO SYMBOLS

Red symbols indicate internal characteristics.
Green symbols indicate external characteristics.

COLOR

D E F G H I J Faint Very Light Light

CLARITY

IF	VVS ¹⁻²	VS ¹⁻²	SI ¹⁻²	I ¹⁻³
Internally Flawless	Very Very Slightly Included	Very Slightly Included	Slightly Included	Included



© IGI 2020, International Gemological Institute

FD - 10 20

www.igi.org

LABORATORY GROWN DIAMOND REPORT



August 5, 2024

IGI Report Number **LG646479225**Description **LABORATORY GROWN DIAMOND**Shape and Cutting Style **ROUND BRILLIANT**

Measurements 7.93 - 8.00 X 4.97 MM

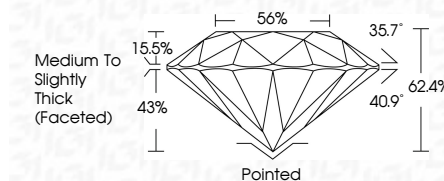
GRADING RESULTS

Carat Weight 1.96 CARAT

Color Grade

Clarity Grade VS 1

Cut Grade **IDEAL**



ADDITIONAL GRADING INFORMATION

Polish EXCELLENT

Symmetry **EXCELLENT**Fluorescence NONEInscription(s)  LG646479225

Comments: This Laboratory Grown Diamond was created by Chemical Vapor Deposition (CVD) growth process.
Type IIa



August 5, 2024	Carat Weight	Color Grade	Clarity Grade	VS 1	1.04 CARAT
GI Report No. LG44679225	Color Grade	Clarity Grade	VS 1	IDEAL	
ROUND BRILLIANT	Color Grade	Clarity Grade	VS 1	62.4%	
	Color Grade	Clarity Grade	VS 1	66%	
	Color Grade	Clarity Grade	VS 1	Medium to Slightly Thick (focused)	
	Color Grade	Clarity Grade	VS 1	Pointed	
	Color Grade	Clarity Grade	VS 1	EXCELLENT	
	Color Grade	Clarity Grade	VS 1	EXCELLENT	
	Color Grade	Clarity Grade	VS 1	NONE	
	Color Grade	Clarity Grade	VS 1	1691 LG44679226	

Comments: The Laboratory Grown Diamond was
 analyzed by a chemical Vapor Deposition
 (CVD) growth process.
 Type IIA