



ELECTRONIC COPY

LABORATORY GROWN DIAMOND REPORT

August 5, 2024	
IGI Report Number	LG646475281
Description	LABORATORY GROWN DIAMOND
Shape and Cutting Style	ROUND BRILLIANT
Measurements	9.05 - 9.11 X 5.55 MM

GRADING RESULTS

Carat Weight	2.80 CARATS
Color Grade	G
Clarity Grade	VS 2
Cut Grade	IDEAL

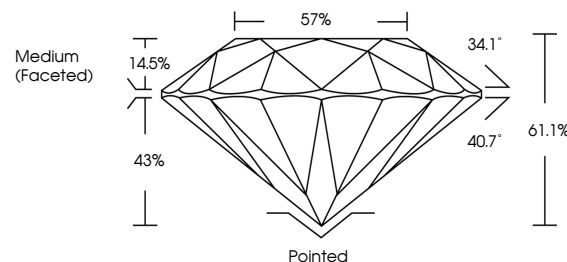
ADDITIONAL GRADING INFORMATION

Polish	EXCELLENT
Symmetry	EXCELLENT
Fluorescence	NONE
Inscription(s)	151 LG646475281

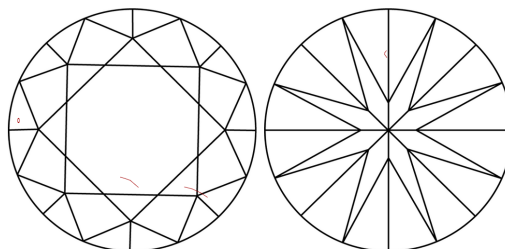
Comments: This Laboratory Grown Diamond was created by Chemical Vapor Deposition (CVD) growth process.
Type IIa

LG646475281
Report verification at lgi.org

PROPORTIONS

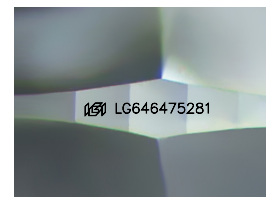


CLARITY CHARACTERISTICS



KEY TO SYMBOLS

Red symbols indicate internal characteristics.
Green symbols indicate external characteristics.



Sample Image Used

COLOR

D E F G H I J Faint Very Light Light

CLARITY

IF	VVS ¹⁻²	VS ¹⁻²	SI ¹⁻²	I ¹⁻³
Internally Flawless	Very Very Slightly Included	Very Slightly Included	Slightly Included	Included



© IGI 2020, International Gemological Institute

FD - 10 20

www.igi.org

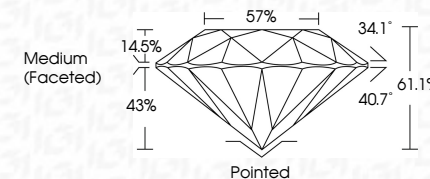
LABORATORY GROWN DIAMOND REPORT



August 5, 2024	
IGI Report Number	LG646475281
Description	LABORATORY GROWN DIAMOND
Shape and Cutting Style	ROUND BRILLIANT
Measurements	9.05 - 9.11 X 5.55 MM

GRADING RESULTS

Carat Weight	2.80 CARATS
Color Grade	G
Clarity Grade	VS 2
Cut Grade	IDEAL



ADDITIONAL GRADING INFORMATION

Polish	EXCELLENT
Symmetry	EXCELLENT
Fluorescence	NONE
Inscription(s)	(GSI) LG646475281
<p>Comments: This Laboratory Grown Diamond was created by Chemical Vapor Deposition (CVD) growth process.</p> <p>Type IIa</p>	



August 5, 2024	G Report No.GS6447281	
VJND BRILLIANT		
0.05 - 9.11 X 5.65 MM		
Carat Weight	2.80 CARATS	
Color Grade	G	
Clarity Grade	VS 2	
Cut Grade	IDEAL	
Depth	61.1%	
Table	57%	
Girdle	Medium (Faceted)	
Culet	Pointed	
Poish	EXCELLENT	
Symmetry	EXCELLENT	
Fluorescence	NONE	
Fingerprint(s)	(#)LS6447281	
Comments:		
	Laboratory Grown Diamond was created by Chemical Vapor Deposition (CVD) growth process.	
	Type IIA	