

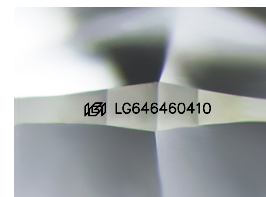
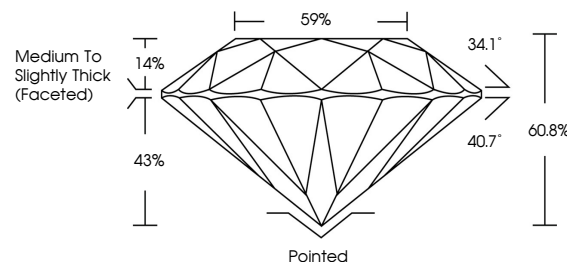


ELECTRONIC COPY

LABORATORY GROWN DIAMOND REPORT

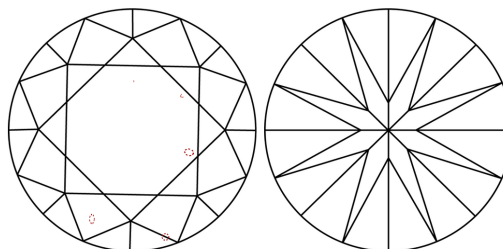
LG646460410
Report verification at lgi.org

PROPORTIONS



Sample Image Used

CLARITY CHARACTERISTICS



KEY TO SYMBOLS

Red symbols indicate internal characteristics.
Green symbols indicate external characteristics.

COLOR

D E F G H I J Faint Very Light Light

CLARITY

IF	VVS ¹⁻²	VS ¹⁻²	SI ¹⁻²	I ¹⁻³
Internally Flawless	Very Very Slightly Included	Very Slightly Included	Slightly Included	Included



© IGI 2020, International Gemological Institute

FD - 10 20

www.igi.org

LABORATORY GROWN DIAMOND REPORT



August 2, 2024

IGI Report Number LG646460410

Description **LABORATORY GROWN DIAMOND**Shape and Cutting Style **ROUND BRILLIANT**

Measurements 10.07 - 10.08 X 6.13 MM

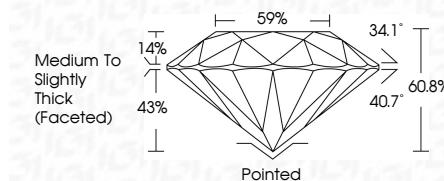
GRADING RESULTS

Carat Weight **3.85 CARATS**

Color Grade G

Clarity Grade VS 2

Cut Grade **IDEAL**



ADDITIONAL GRADING INFORMATION

Polish **EXCELLENT**Symmetry **EXCELLENT**Fluorescence **NONE**Inscription(s) LG646460410

Comments: This Laboratory Grown Diamond was created by Chemical Vapor Deposition (CVD) growth process.
Type IIa



IG

Report No. 2024	Report No. LG56460410
ROUND BRILLIANT	
10.07 - 10.08 X 6.13 MM	
Carat Weight	3.85 CARATS
Color Grade	G
Clarity Grade	VS 2
Cut Grade	IDEAL
Depth	60.8%
Table	95%
Gable	Medium to Slightly Thick (Faceted)
Culet	Pointed
Polish	EXCELLENT
Symmetry	EXCELLENT
Fluorescence	NONE
Comments:	(#) LG5646041010
The Laboratory Chemical Vapor Deposition (CVD) growth process.	
Type IId	