

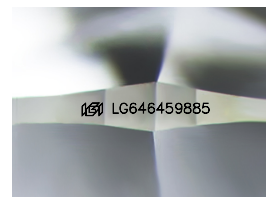
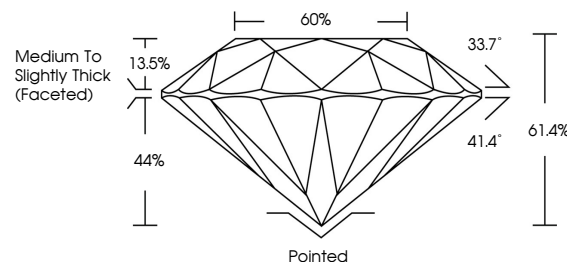


ELECTRONIC COPY

LABORATORY GROWN DIAMOND REPORT

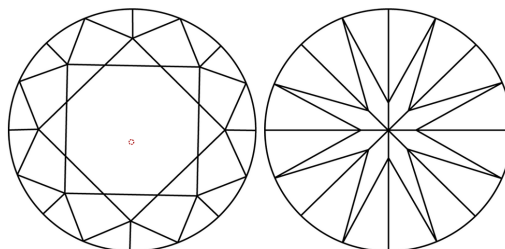
LG646459885
Report verification at lgi.org

PROPORTIONS



Sample Image Used

CLARITY CHARACTERISTICS



KEY TO SYMBOLS

Red symbols indicate internal characteristics.
Green symbols indicate external characteristics.

COLOR

D E F G H I J Faint Very Light Light

CLARITY

| IF | VVS ¹⁻² | VS ¹⁻² | SI ¹⁻² | I ¹⁻³ |
|---------------------|-----------------------------|------------------------|-------------------|------------------|
| Internally Flawless | Very Very Slightly Included | Very Slightly Included | Slightly Included | Included |



© IGI 2020, International Gemological Institute

FD - 10 20

www.igi.org

LABORATORY GROWN DIAMOND REPORT



August 3, 2024

IGI Report Number **LG646459885**Description **LABORATORY GROWN DIAMOND**Shape and Cutting Style **ROUND BRILLIANT**

Measurements 7.27 - 7.30 X 4.48 MM

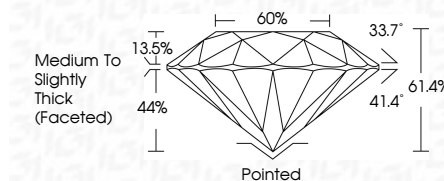
GRADING RESULTS

Carat Weight 1.47 CARAT

Color Grade

Clarity Grade WS 2

Cut Grade **IDEAL**



ADDITIONAL GRADING INFORMATION

Polish **EXCELLENT**Symmetry **EXCELLENT**Fluorescence **NONE**Inscription(s) LG646459885

Comments: This Laboratory Grown Diamond was created by Chemical Vapor Deposition (CVD) growth process.
Type IIa



| | | | |
|-------------------------|---|------------------------------------|---------------|
| August 3, 2024 | 1.47 CARAT | W6 E | Painted |
| GI Report No. G54469885 | Color Weight | V6 S2 | EXCELLENT |
| YOUNG BRILLIANT | Color Grade | IDEAL | EXCELLENT |
| | Clarity Grade | 61.4% | NONE |
| | Cut Grade | 50% | (#) G54469885 |
| | Depth | Medium to Slightly Thick (Faceted) | |
| | Table | | |
| | Girdle | | |
| | Culet | | |
| | Polish | | |
| | Symmetry | | |
| | Fluorescence | | |
| | Fluorescence(s) | | |
| | Comments: | | |
| | The Laboratory Given Diamond was created by Chemical Vapor Deposition (CVD) growth process. | | |
| | Type IIA | | |