

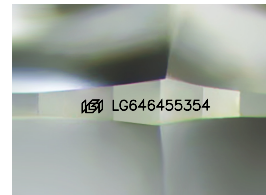
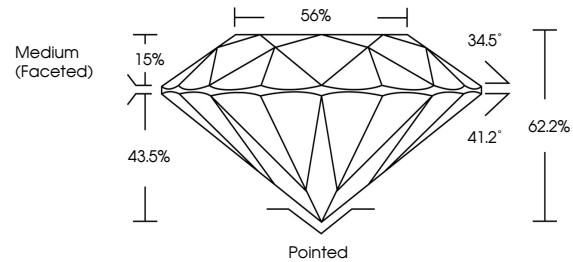


**INTERNATIONAL  
GEMOLOGICAL  
INSTITUTE**

**ELECTRONIC COPY**

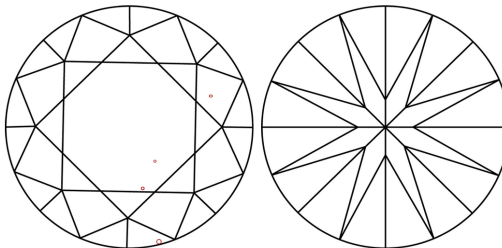
LG646455354  
Report verification at [igi.org](https://www.igi.org)

## PROPORTIONS



Sample Image Used

## CLARITY CHARACTERISTICS



## KEY TO SYMBOLS

Red symbols indicate internal characteristics.  
Green symbols indicate external characteristics.

## COLOR

D E F G H I J Faint Very Light Light

## CLARITY

IF	WVS <sup>1-2</sup>	VS <sup>1-2</sup>	SI <sup>1-2</sup>	I <sup>1-3</sup>
Internally Flawless	Very Very Slightly Included	Very Slightly Included	Slightly Included	Included

© IGI 2020, International Gemological Institute

FD - 10 20

LABORATORY GROWN DIAMOND REPORT



August 5, 2024

IGI Report Number **LG646455354**

Description	LABORATORY GROWN DIAMOND
-------------	--------------------------

Shape and Cutting Style **ROUND BRILLIANT**

Measurements	10.25 - 10.27 X 6.38 MM
--------------	-------------------------

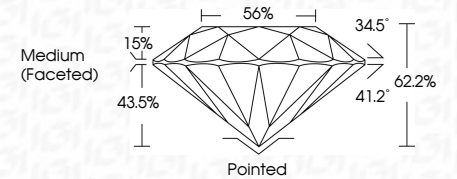
## GRADING RESULTS

Carat Weight **4.10 CARATS**

Color Grade	G
-------------	---

Clarity Grade VS 2

Cut Grade **IDEAL**



### ADDITIONAL GRADING INFORMATION

Polish **EXCELLENT**

Symmetry **EXCELLENT**

Fluorescence **NONE**Inscription(s)  LG646455354

Comments: This Laboratory Grown Diamond was created by Chemical Vapor Deposition (CVD) growth process.  
Type IIa



IGI

August 5, 2024	IGI Report No. IGL64465354	
REPORT BEHIND		
10.26 - 10.27 X 6.38 MM		
Carat Weight	4.10 CARATS	
Color Grade	G	
Clarity Grade	Vs 2	
Cut Grade	IDEAL	
Depth	62.2%	
Table	56%	
Girdle	Medium (Faced)	
Culet	Pointed	
Polish	EXCELLENT	
Symmetry	EXCELLENT	
Fluorescence (incriptions)	NONE	IGI IGL64465354
Comments: This Laboratory Grown Diamond was created by Chemical Vapor Deposition (CVD) growth process. Type IId		

**www.igi.org**

