

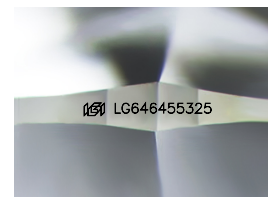
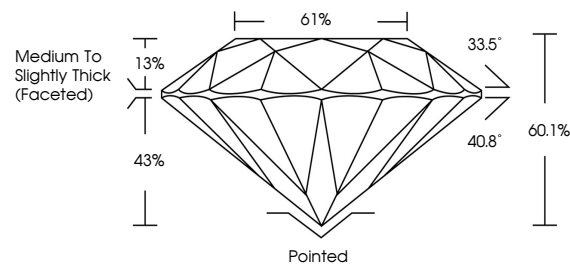


**ELECTRONIC COPY**

## LABORATORY GROWN DIAMOND REPORT

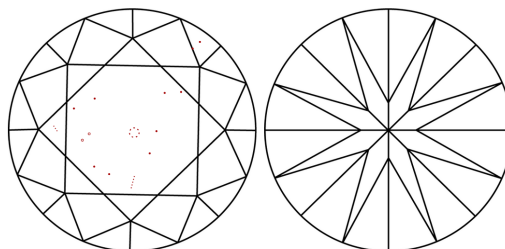
LG646455325  
Report verification at [igi.org](https://igi.org)

## PROPORTIONS



Sample Image Used

## CLARITY CHARACTERISTICS



## KEY TO SYMBOLS

Red symbols indicate internal characteristics.  
Green symbols indicate external characteristics.

**COLOR**

D E F G H I J Faint Very Light Light

## CLARITY

IF	VVS <sup>1,2</sup>	VS <sup>1,2</sup>	SI <sup>1,2</sup>	I <sup>1,3</sup>
Internally Flawless	Very Very Slightly Included	Very Slightly Included	Slightly Included	Included



© IGI 2020, International Gemological Institute

FD - 10 20

**www.igi.org**

## LABORATORY GROWN DIAMOND REPORT



August 2, 2024

IGI Report Number **LG646455325**

Description	LABORATORY GROWN DIAMOND
-------------	--------------------------

Shape and Cutting Style **ROUND BRILLIANT**

Measurements 10.20 - 10.31 X 6.16 MM

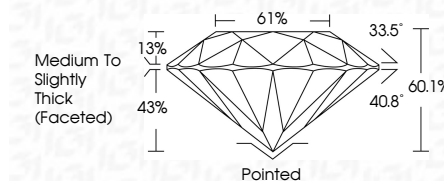
## GRADING RESULTS

Carat Weight **4.01 CARATS**

Color Grade G

Clarity Grade VS 2

Cut Grade **EXCELLENT**



### ADDITIONAL GRADING INFORMATION

Polish **EXCELLENT**Symmetry **EXCELLENT**Fluorescence **NONE**Inscription(s)  LG646455325

Comments: This Laboratory Grown Diamond was created by Chemical Vapor Deposition (CVD) growth process.  
Type IIa



August 2, 2024	
GI Report No. G54465325	
ROUND BRILLIANT	
10.20 - 10.31 X 6.16 MM	
Color Grade	4.01 CARATS
Carat Weight	G
Cut Grade	Vs 2
Clarity Grade	EXCELLENT
Depth	60.1%
Girdle	0.1%
	Medium to Slightly Thick (Faceted)
Culet	Pointed
Polish	EXCELLENT
Symmetry	EXCELLENT
Fluorescence	NONE
Fluorescence(s)	(#) G54465325
Comments:	
	The Laboratory Grown Diamond was created by Chemical Vapor Deposition (CVD) growth process.
	type IIA