

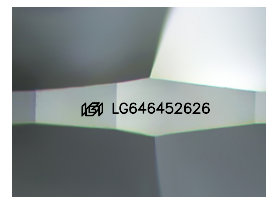
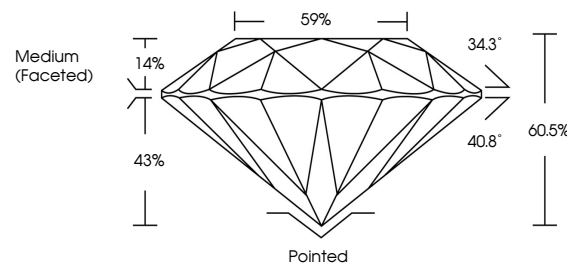


**ELECTRONIC COPY**

## LABORATORY GROWN DIAMOND REPORT

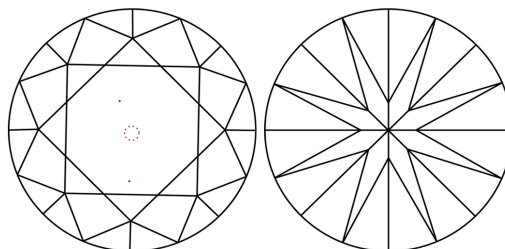
LG646452626  
Report verification at [lgi.org](https://lgi.org)

## PROPORTIONS



Sample Image Used

## CLARITY CHARACTERISTICS



## KEY TO SYMBOLS

Red symbols indicate internal characteristics.  
Green symbols indicate external characteristics.

## COLOR

D E F G H I J Faint Very Light Light

## CLARITY

IF	VVS <sup>1-2</sup>	VS <sup>1-2</sup>	SI <sup>1-2</sup>	I <sup>1-3</sup>
Internally Flawless	Very Very Slightly Included	Very Slightly Included	Slightly Included	Included



© IGI 2020, International Gemological Institute

FD - 10 20

**www.igi.org**

## LABORATORY GROWN DIAMOND REPORT



August 2, 2024

IGI Report Number **LG646452626**Description **LABORATORY GROWN DIAMOND**Shape and Cutting Style **ROUND BRILLIANT**

Measurements 9.90 - 9.93 X 6.00 MM

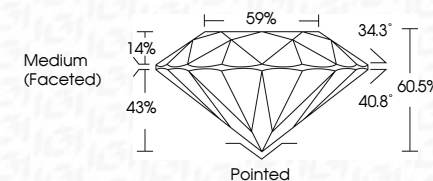
## GRADING RESULTS

Carat Weight **3.61 CARATS**

Color Grade G

Clarity Grade VS 2

Cut Grade **IDEAL**



### ADDITIONAL GRADING INFORMATION

Polish **EXCELLENT**Symmetry **EXCELLENT**Fluorescence NONEInscription(s)  LG646452626

Comments: This Laboratory Grown Diamond was created by Chemical Vapor Deposition (CVD) growth process.  
Type IIa



August 2, 2024		Report No. LG4464266	
ROUND BRILLIANT			
9.00 - 9.03 X 6.00 MM			
Carat Weight	3.61 CARATS	G	
Color Grade		VS 2	
Clarity Grade		IDEAL	
Cut Grade		60.0%	
Depth		59%	
Table			
Girdle		Medium (Faceted)	
Culet		Pointed	
Polish		EXCELLENT	
Symmetry		EXCELLENT	
Fluorescence		NONE	
Inscription(s)		lg9 LG4464266	
Comments:		The Laboratory Crown Diamond was certified for Natural Origin by the GIA® growth process.	
		Type IIA	