

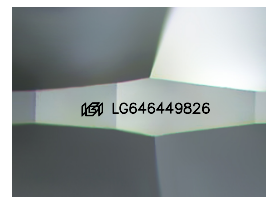
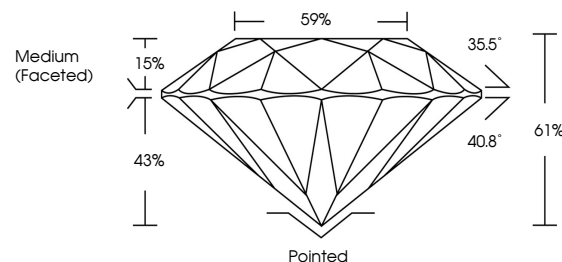


ELECTRONIC COPY

LABORATORY GROWN DIAMOND REPORT

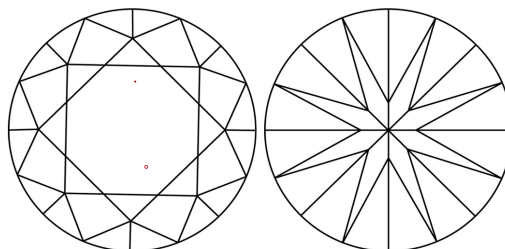
LG646449826
Report verification at lgi.org

PROPORTIONS



Sample Image Used

CLARITY CHARACTERISTICS



KEY TO SYMBOLS

Red symbols indicate internal characteristics.
Green symbols indicate external characteristics.

COLOR

D E F G H I J Faint Very Light Light

CLARITY

IF	VVS ¹⁻²	VS ¹⁻²	SI ¹⁻²	I ¹⁻³
Internally Flawless	Very Very Slightly Included	Very Slightly Included	Slightly Included	Included



© IGI 2020, International Gemological Institute

FD - 10 20

www.igi.org

LABORATORY GROWN DIAMOND REPORT



August 2, 2024

IGI Report Number **LG646449826**Description **LABORATORY GROWN DIAMOND**Shape and Cutting Style **ROUND BRILLIANT**

Measurements	6.66 - 6.64 X 4.05 MM
--------------	-----------------------

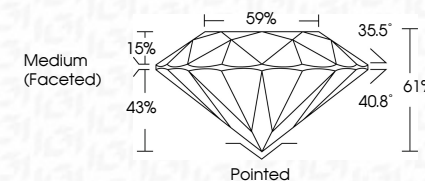
GRADING RESULTS

Carat Weight 1.09 CARAT

Color Grade

Clarity Grade VS 1

Cut Grade **IDEAL**



ADDITIONAL GRADING INFORMATION

Polish **EXCELLENT**Symmetry **EXCELLENT**Fluorescence NONEInscription(s) LG646449826

Comments: This Laboratory Grown Diamond was created by Chemical Vapor Deposition (CVD) growth process.
Type IIa



IG

August 2, 2024	1.07 CARAT	Vs1	61%	59%	Polished	Excellent	None	GSI LG54449825 (8) LG54449825 Comments: The Laboratory Grown Diamond was created by Chemical Vapor Deposition (CVD) growth process. type IIA
G Report No LG54449825 ROUND BRILLIANT 6.65 - 6.64 x 4.05 MM Color Weight Color Grade Clarity Grade Cut Grade Depth Table Girdle Medium (Faceted)	D	IDEAL			Excellent	Excellent		