

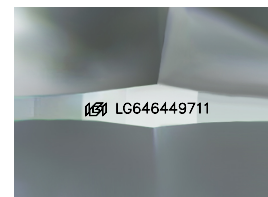
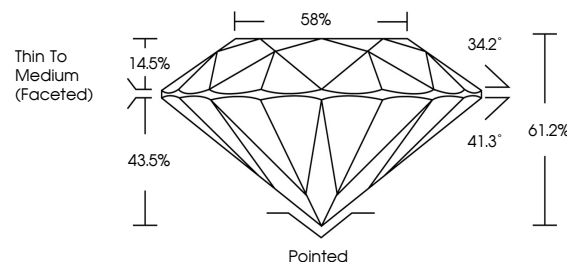


ELECTRONIC COPY

LABORATORY GROWN DIAMOND REPORT

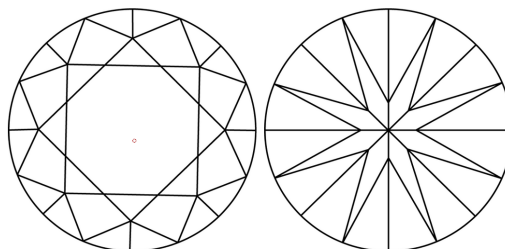
LG646449711
Report verification at [igi.org](https://www.igi.org)

PROPORTIONS



Sample Image Used

CLARITY CHARACTERISTICS



KEY TO SYMBOLS

Red symbols indicate internal characteristics.
Green symbols indicate external characteristics.

COLOR

D E F G H I J Faint Very Light Light

CLARITY

IF	VVS ¹⁻²	VS ¹⁻²	SI ¹⁻²	I ¹⁻³
Internally Flawless	Very Very Slightly Included	Very Slightly Included	Slightly Included	Included



© IGI 2020, International Gemological Institute

FD - 10 20

www.igi.org

LABORATORY GROWN DIAMOND REPORT



August 3, 2024

IGI Report Number **LG646449711**Description **LABORATORY GROWN DIAMOND**Shape and Cutting Style **ROUND BRILLIANT**

Measurements 6.60 - 6.63 X 4.06 MM

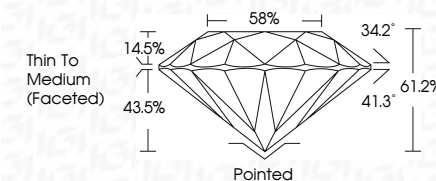
GRADING RESULTS

Carat Weight 1.08 CARAT

Color Grade

Clarity Grade VS 1

Cut Grade **IDEAL**



ADDITIONAL GRADING INFORMATION

Polish EXCELLENT

Symmetry **EXCELLENT**Fluorescence **NONE**Inscription(s) LG646449711

Comments: This Laboratory Grown Diamond was created by Chemical Vapor Deposition (CVD) growth process.
Type IIa



August 3, 2024
GI Report No LG64649711
ROUND BRILLIANT

6.60 - 6.63 X 4.05 MM	1.08 CARAT	D
Carat Weight	VS 1	IDEAL
Color Grade	61.2%	58%
Clarity Grade	Thin To Medium	(graded)
Depth		Pointed
Table		EXCELLENT
Girdle		EXCELLENT
Culet		NONE
Polish		EXCELLENT
Symmetry		EXCELLENT
Fluorescence		NONE
Report #		4561234567890123

Comments:
This Laboratory Grown Diamond was
created by Chemical Vapor Deposition
(CVD) growth process.