

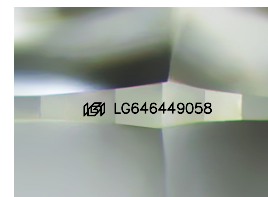
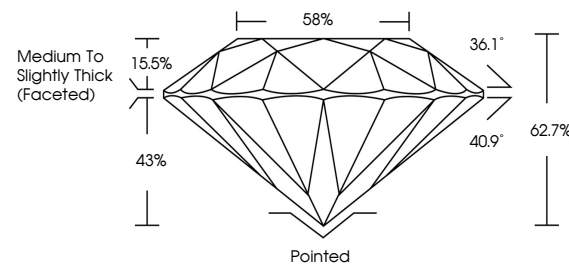


ELECTRONIC COPY

LABORATORY GROWN DIAMOND REPORT

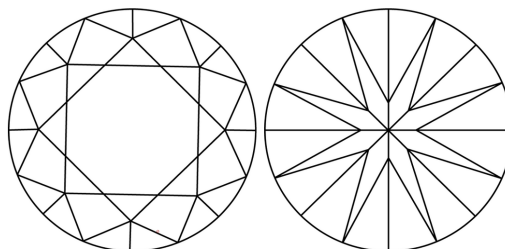
LG646449058
Report verification at igi.org

PROPORTIONS



Sample Image Used

CLARITY CHARACTERISTICS



KEY TO SYMBOLS

Red symbols indicate internal characteristics.
Green symbols indicate external characteristics.

COLOR

D E F G H I J Faint Very Light Light

CLARITY

IF	VVS ¹⁻²	VS ¹⁻²	SI ¹⁻²	I ¹⁻³
Internally Flawless	Very Very Slightly Included	Very Slightly Included	Slightly Included	Included



© IGI 2020, International Gemological Institute

FD - 10 20

www.igi.org

LABORATORY GROWN DIAMOND REPORT



August 3, 2024

IGI Report Number **LG646449058**

Description **LABORATORY GROWN DIAMOND**Shape and Cutting Style **ROUND BRILLIANT**

Measurements 9.09 - 9.12 X 5.71 MM

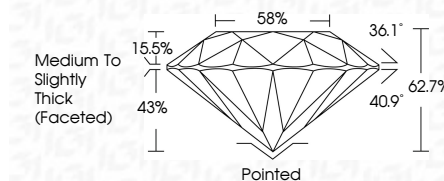
GRADING RESULTS

Carat Weight **2.96 CARATS**

Color Grade F

Clarity Grade VVS 2

Cut Grade **EXCELLENT**



ADDITIONAL GRADING INFORMATION

Polish **EXCELLENT**Symmetry **EXCELLENT**Fluorescence **NONE**Inscription(s) LG646449058

Comments: This Laboratory Grown Diamond was created by Chemical Vapor Deposition (CVD) growth process.
Type IIa



August 3, 2024	
GJ Report No. LG6449058	
YOUNG BRILLIANT	
0.05 - 9.12 x 5.71 MM	
Coral Weight	2.5% CARATS
Color Grade	F 2
Clarity Grade	VVS 2
Cut Grade	EXCELLENT
Depth	62.7%
Table	88%
Girdle	Medium to Slightly Thick (Faceted)
Culet	Painted
Polish	EXCELLENT
Symmetry	EXCELLENT
Fluorescence	NONE
Proportion(s)	(#) LG6449058
Comments:	
The Laboratory Grown Diamond was created by Chemical Vapor Deposition (CVD) growth process.	
Type IIA	