

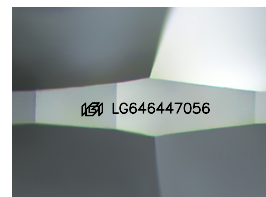
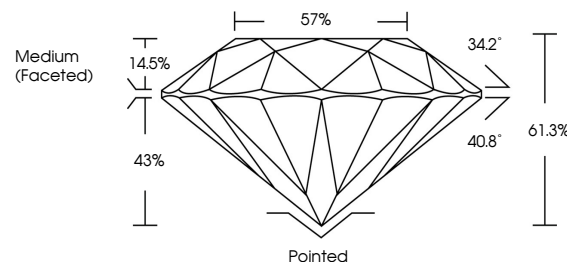


**ELECTRONIC COPY**

## LABORATORY GROWN DIAMOND REPORT

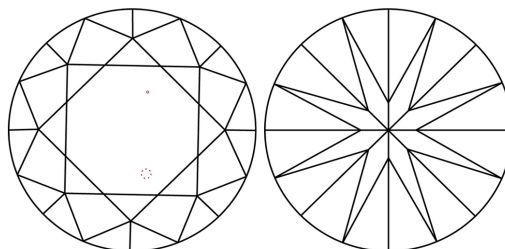
LG646447056  
Report verification at [lgi.org](https://lgi.org)

## PROPORTIONS



Sample Image Used

## CLARITY CHARACTERISTICS



## KEY TO SYMBOLS

Red symbols indicate internal characteristics.  
Green symbols indicate external characteristics.

## COLOR

D E F G H I J Faint Very Light Light

## CLARITY

IF	VVS <sup>1-2</sup>	VS <sup>1-2</sup>	SI <sup>1-2</sup>	I <sup>1-3</sup>
Internally Flawless	Very Very Slightly Included	Very Slightly Included	Slightly Included	Included



© IGI 2020, International Gemological Institute

FD - 10 20

## LABORATORY GROWN DIAMOND REPORT



August 3, 2024

IGI Report Number **LG646447056**Description **LABORATORY GROWN DIAMOND**Shape and Cutting Style **ROUND BRILLIANT**

Measurements 7.98 - 8.02 X 4.90 MM

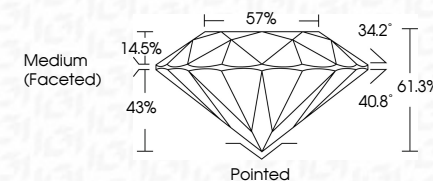
## GRADING RESULTS

Carat Weight 1.93 CARAT

Color Grade F

Clarity Grade VS 2

Cut Grade **IDEAL**



### ADDITIONAL GRADING INFORMATION

Polish **EXCELLENT**Symmetry **EXCELLENT**Fluorescence **NONE**Inscription(s)  LG646447056

Comments: This Laboratory Grown Diamond was created by Chemical Vapor Deposition (CVD) growth process.  
Type IIa



August 3, 2024	1.98 - 8.02 x 4.90 MM	1.98 CARAT	VS 2	Polished	Grown by: The Laboratory Grown Diamond was created by Chemical Vapor Deposition (CVD) growth process. type IIa
GI Report No LG56447056	Carat Weight		IDEAL	EXCELLENT	
ROUND BRILLIANT	Color Grade		61.3%	NONE	
	Clarity Grade		57%		
	Depth		Medium (Faceted)	gsl LG56447056	
	Table				
	Girdle				
	Culet				
	Booth				
	Symmetry				
	Fluorescence				
	Fluorescence(s)				