

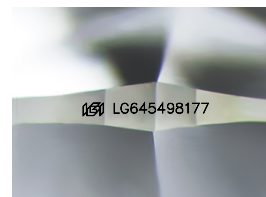
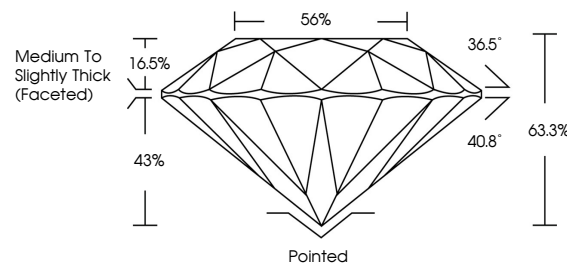


ELECTRONIC COPY

LABORATORY GROWN DIAMOND REPORT

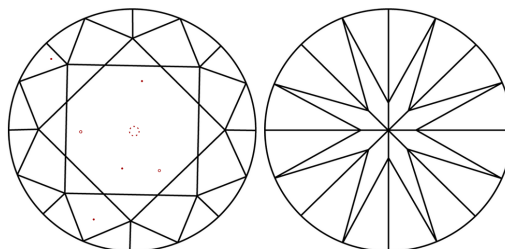
LG645498177
Report verification at [igi.org](https://www.igi.org)

PROPORTIONS



Sample Image Used

CLARITY CHARACTERISTICS



KEY TO SYMBOLS

Red symbols indicate internal characteristics.
Green symbols indicate external characteristics.

COLOR

D E F G H I J Faint Very Light Light

CLARITY

IF	VVS ¹⁻²	VS ¹⁻²	SI ¹⁻²	I ¹⁻³
Internally Flawless	Very Very Slightly Included	Very Slightly Included	Slightly Included	Included



© IGI 2020, International Gemological Institute

FD - 10 20

www.igi.org

LABORATORY GROWN DIAMOND REPORT



July 30, 2024

IGI Report Number **LG645498177**Description **LABORATORY GROWN DIAMOND**Shape and Cutting Style **ROUND BRILLIANT**

Measurements 9.09 - 9.13 X 5.76 MM

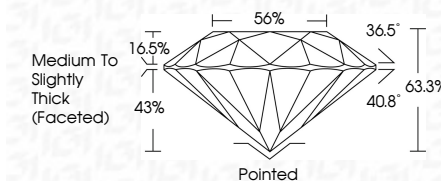
GRADING RESULTS

Carat Weight **2.96 CARATS**

Color Grade F

Clarity Grade VS 1

Cut Grade **EXCELLENT**



ADDITIONAL GRADING INFORMATION

Polish **EXCELLENT**Symmetry **EXCELLENT**Fluorescence **NONE**Inscription(s) LG645498177

Comments: This Laboratory Grown Diamond was created by Chemical Vapor Deposition (CVD) growth process.
Type IIa



July 30, 2024
GI Report No LG645498177
ROUND BRILLIANT

2.09 - 9.13 X 5.75 MM	2% CARATS	VS 1	Pointed
Carat Weight	EXCELLENT	63.5%	EXCELLENT
Color Grade	56%	Medium to slightly Thick (faceted)	NONE
Clarity Grade			4mm (24.65x9.81x7.25mm)
Depth			
Table			
Girdle			
Culet			
Polish			
Symmetry			
Fluorescence			

Comments:
This Laboratory Grown Diamond was created by Chemical Vapor Deposition (CVD) growth process.