

ELECTRONIC COPY

LABORATORY GROWN DIAMOND REPORT

July 30, 2024	
IGI Report Number	LG645496413
Description	LABORATORY GROWN DIAMOND
Shape and Cutting Style	SQUARE CUSHION BRILLIANT
Measurements	7.43 X 7.31 X 4.87 MM

GRADING RESULTS

Carat Weight	2.04 CARATS
Color Grade	F
Clarity Grade	SI 1

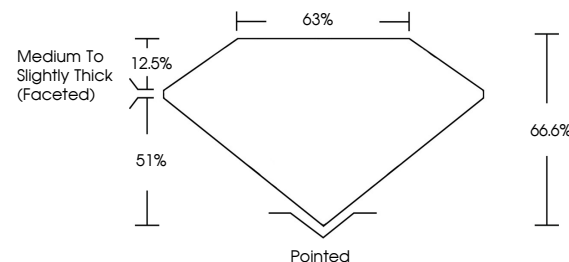
ADDITIONAL GRADING INFORMATION

Polish	EXCELLENT
Symmetry	EXCELLENT
Fluorescence	NONE
Inscription(s)	151 LG645496413

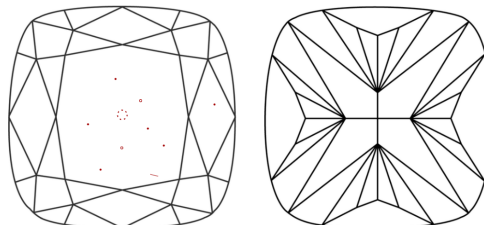
Comments: This Laboratory Grown Diamond was created by Chemical Vapor Deposition (CVD) growth process.
Type IIa

LG645496413
Report verification at lgi.org

PROPORTIONS

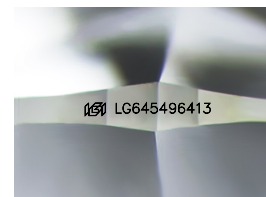


CLARITY CHARACTERISTICS



KEY TO SYMBOLS

Red symbols indicate internal characteristics.
Green symbols indicate external characteristics.



Sample Image Used

COLOR

D E F G H I J Faint Very Light Light

CLARITY

IF	VVS ^{1,2}	VS ^{1,2}	SI ^{1,2}	I ^{1,3}
Internally Flawless	Very Very Slightly Included	Very Slightly Included	Slightly Included	Included



© IGI 2020, International Gemological Institute

FD - 10 20

www.igi.org

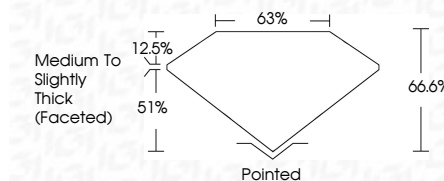
LABORATORY GROWN DIAMOND REPORT



July 30, 2024	
IGI Report Number	LG645496413
Description	LABORATORY GROWN DIAMOND
Shape and Cutting Style	SQUARE CUSHION BRILLIANT
Measurements	7.43 X 7.31 X 4.87 MM

GRADING RESULTS

Carat Weight	2.04 CARATS
Color Grade	F
Clarity Grade	SI 1



ADDITIONAL GRADING INFORMATION

Polish	EXCELLENT
Symmetry	EXCELLENT
Fluorescence	NONE
Inscription(s)	163 LG645496413
<p>Comments: This Laboratory Grown Diamond was created by Chemical Vapor Deposition (CVD) growth process.</p> <p>Type IIa</p>	



July 30, 2024	
GJ Report No LG645696413	
SQUARE CUSHION BRILLIANT	
43 X 43 X 7.31 X 4.87 MM	
Carat Weight	2.04 CARATS
Color Grade	F
Clarity Grade	S I1
Depth	66.6%
Table	63%
Girdle	Medium to Slightly Thick (Faceted)
Culet	Poinked
Polish	EXCELLENT
Symmetry	EXCELLENT
Fluorescence	NONE
Inscriptions(s)	lgj LG645696413

Comments:
This Laboratory Grown Diamond was created by Chemical Vapor Deposition (CVD) growth process.
Type IIa