

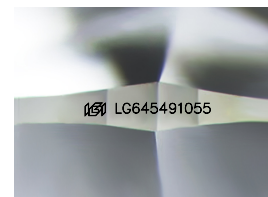
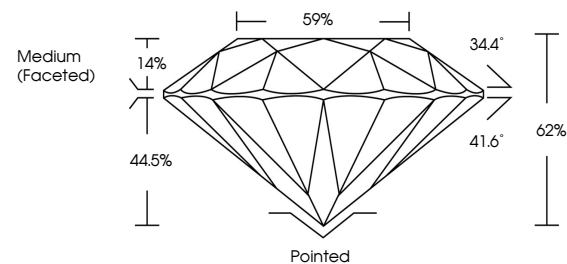


ELECTRONIC COPY

LABORATORY GROWN DIAMOND REPORT

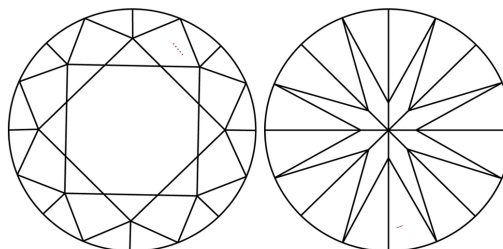
LG645491055
Report verification at igi.org

PROPORTIONS



Sample Image Used

CLARITY CHARACTERISTICS



KEY TO SYMBOLS

Red symbols indicate internal characteristics.
Green symbols indicate external characteristics.

COLOR

D E F G H I J Faint Very Light Light

CLARITY

IF	VVS ¹⁻²	VS ¹⁻²	SI ¹⁻²	I ¹⁻³
Internally Flawless	Very Very Slightly Included	Very Slightly Included	Slightly Included	Included



© IGI 2020, International Gemological Institute

FD - 10 20

www.igi.org

LABORATORY GROWN DIAMOND REPORT



July 29, 2024

IGI Report Number **LG645491055**Description **LABORATORY GROWN DIAMOND**Shape and Cutting Style **ROUND BRILLIANT**

Measurements 6.53 - 6.59 X 4.07 MM

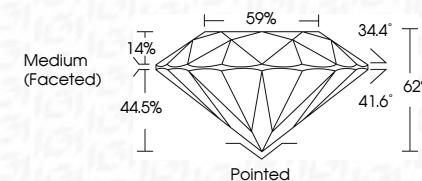
GRADING RESULTS

Carat Weight **1.06 CARAT**

Color Grade E

Clarity Grade VS 1

Cut Grade **EXCELLENT**



ADDITIONAL GRADING INFORMATION

Polish EXCELLENT

Symmetry **EXCELLENT**Fluorescence **NONE**Inscription(s) LG645491055

Comments: This Laboratory Grown Diamond was created by Chemical Vapor Deposition (CVD) growth process.
Type IIa



July 29, 2024	GI Report No. LG456491055	
ROUND BRILLIANT		
1.06 CARAT		
Color Grade	Vs1	
Clarity Grade	EXCELLENT	
Cut Grade	62%	
Depth	59%	
Table		
Girdle	Medium (Faceted)	
Culet	Pointed	
Polish	EXCELLENT	
Symmetry	EXCELLENT	
Fluorescence	NONE	
Phosphorescence(s)	(8) LG456491055	
Comments:		
The Laboratory Grown Diamond was created by Chemical Vapor Deposition (CVD) growth process.		
Type Ila		