

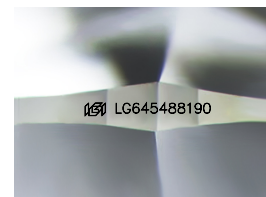
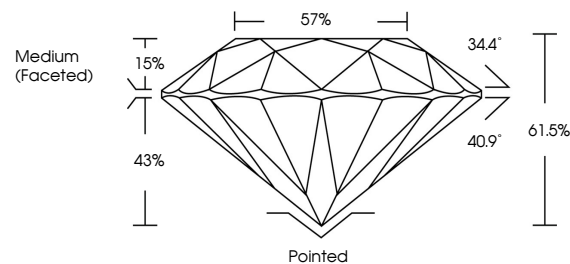


ELECTRONIC COPY

LABORATORY GROWN DIAMOND REPORT

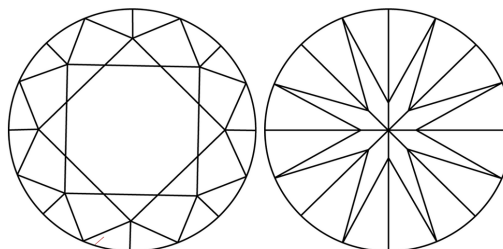
LG645488190
Report verification at igi.org

PROPORTIONS



Sample Image Used

CLARITY CHARACTERISTICS



KEY TO SYMBOLS

Red symbols indicate internal characteristics.
Green symbols indicate external characteristics.

COLOR

D E F G H I J Faint Very Light Light

CLARITY

IF	VVS ¹⁻²	VS ¹⁻²	SI ¹⁻²	I ¹⁻³
Internally Flawless	Very Very Slightly Included	Very Slightly Included	Slightly Included	Included



© IGI 2020, International Gemological Institute

FD - 10 20

www.igi.org

LABORATORY GROWN DIAMOND REPORT



July 27, 2024

IGI Report Number **LG645488190**Description **LABORATORY GROWN DIAMOND**Shape and Cutting Style **ROUND BRILLIANT**

Measurements 8.22 - 8.29 X 5.07 MM

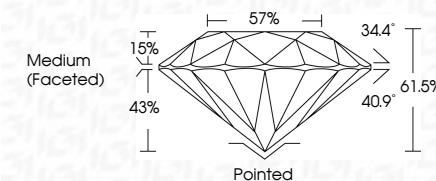
GRADING RESULTS

Carat Weight **2.11 CARATS**

Color Grade	F
-------------	---

Clarity Grade VS 1

Cut Grade **IDEAL**



ADDITIONAL GRADING INFORMATION

Polish EXCELLENT

Symmetry **EXCELLENT**Fluorescence **NONE**Inscription(s)  LG645488190

Comments: This Laboratory Grown Diamond was created by Chemical Vapor Deposition (CVD) growth process.
Type IIa



July 27, 2024	Report No. LG56468190	
ROUND BRILLIANT		
22-22 - 8.29 X 5.07 MM		
Carat Weight	2.11 CARATS	
Color Grade	F	
Clarity Grade	Vs1	
Cut Grade	IDEAL	
Depth	61.5%	
Table	57%	
Gable	Medium (Faceted)	
Culet	Pointed	
Polish	EXCELLENT	
Symmetry	EXCELLENT	
Fluorescence	NONE	
Comments(s)	(#) LG56468190	
Comments:		
	The Laboratory Chemical Diamond was created by Chemical Vapor Deposition (CVD) growth process.	
	Type IId	