



**ELECTRONIC COPY**

## LABORATORY GROWN DIAMOND REPORT

July 30, 2024	
IGI Report Number	LG645486489
Description	LABORATORY GROWN DIAMOND
Shape and Cutting Style	ROUND BRILLIANT
Measurements	9.17 - 9.20 X 5.58 MM

## GRADING RESULTS

Carat Weight	2.87 CARATS
Color Grade	F
Clarity Grade	VS 2
Cut Grade	IDEAL

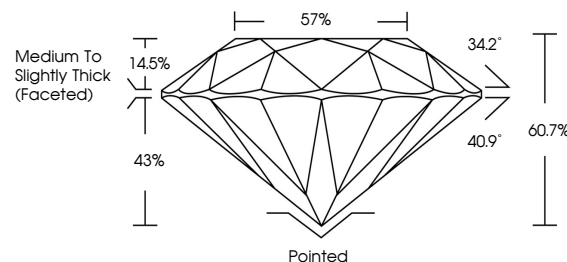
### ADDITIONAL GRADING INFORMATION

Polish	EXCELLENT
Symmetry	EXCELLENT
Fluorescence	NONE
Inscription(s)	15 LG645486489

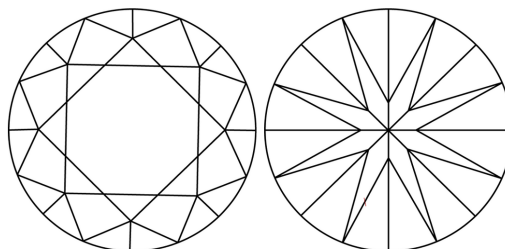
Comments: This Laboratory Grown Diamond was created by Chemical Vapor Deposition (CVD) growth process.  
Type IIa

LG645486489  
Report verification at [lgi.org](https://lgi.org)

## PROPORTIONS

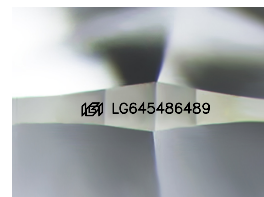


## CLARITY CHARACTERISTICS



## KEY TO SYMBOLS

Red symbols indicate internal characteristics.  
Green symbols indicate external characteristics.



Sample Image Used

## COLOR

D E F G H I J Faint Very Light Light

## CLARITY

IF	VVS <sup>1,2</sup>	VS <sup>1,2</sup>	SI <sup>1,2</sup>	I <sup>1,3</sup>
Internally Flawless	Very Very Slightly Included	Very Slightly Included	Slightly Included	Included



© IGI 2020, International Gemological Institute

FD - 10 20

**www.igi.org**

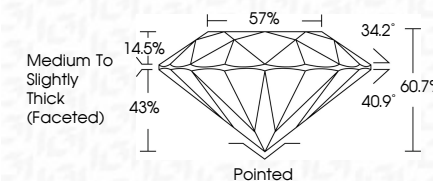
## LABORATORY GROWN DIAMOND REPORT



July 30, 2024	
IGI Report Number	LG645486489
Description	LABORATORY GROWN DIAMOND
Shape and Cutting Style	ROUND BRILLIANT
Measurements	9.17 - 9.20 X 5.58 MM

## GRADING RESULTS

Carat Weight	2.87 CARATS
Color Grade	F
Clarity Grade	VS 2
Cut Grade	IDEAL



### ADDITIONAL GRADING INFORMATION

Polish	EXCELLENT
Symmetry	EXCELLENT
Fluorescence	NONE
Inscription(s)	(15) LG645486489
<p>Comments: This Laboratory Grown Diamond was created by Chemical Vapor Deposition (CVD) growth process.</p> <p>Type IIa</p>	



IG

July 30, 2024  
GI Report No LG645486489  
ROUND BRILLIANT

17.17 - 9.20 X 5.58 MM	2.87 CARATS	F
Carat Weight	Vs 2	IDEAL
Color Grade	60.7%	57%
Clarity Grade	Medium to Slightly Thick (Faceted)	Painted
Cut Grade		EXCELLENT
Depth		EXCELLENT
Table		Symmetry
Grade		Fluorescence

**Comments:**  
This Laboratory Grown Diamond was  
created by Chemical Vapor Deposition  
(CVD) growth process.