

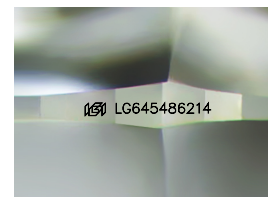
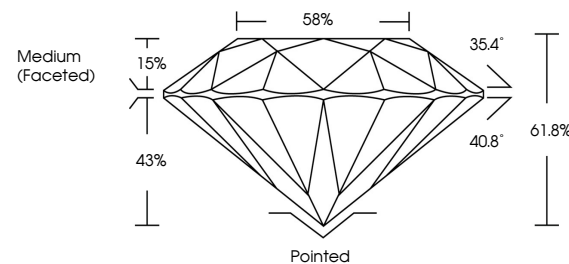


ELECTRONIC COPY

LABORATORY GROWN DIAMOND REPORT

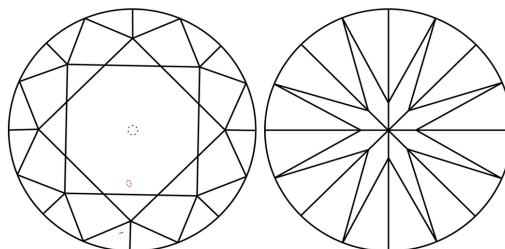
LG645486214
Report verification at igi.org

PROPORTIONS



Sample Image Used

CLARITY CHARACTERISTICS



KEY TO SYMBOLS

Red symbols indicate internal characteristics.
Green symbols indicate external characteristics.

COLOR

D E F G H I J Faint Very Light Light

CLARITY

IF	VVS ¹⁻²	VS ¹⁻²	SI ¹⁻²	I ¹⁻³
Internally Flawless	Very Very Slightly Included	Very Slightly Included	Slightly Included	Included



© IGI 2020, International Gemological Institute

FD - 10 20

www.igi.org

LABORATORY GROWN DIAMOND REPORT



July 29, 2024

IGI Report Number **LG645486214**Description **LABORATORY GROWN DIAMOND**Shape and Cutting Style **ROUND BRILLIANT**

Measurements 7.83 - 7.89 X 4.86 MM

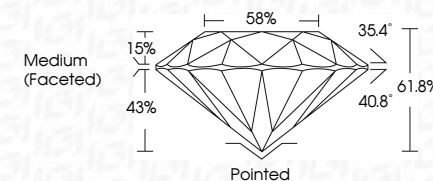
GRADING RESULTS

Carat Weight 1.86 CARAT

Color Grade E

Clarity Grade VS 2

Cut Grade **IDEAL**



ADDITIONAL GRADING INFORMATION

Polish EXCELLENT

Symmetry **EXCELLENT**Fluorescence **NONE**Inscription(s) LG645486214

Comments: This Laboratory Grown Diamond was created by Chemical Vapor Deposition (CVD) growth process.
Type IIa



July 29, 2024
GI Report No LG645486214
ROUND BRILLIANT

ROUND BRILLIANT	1.86 CARAT E
7.83 - 7.89 X 4.86 MM	VS 2
Carat Weight	IDEAL
Color Grade	61.8%
Clarity Grade	58%
Cut Grade	Medium (Faceted)
Depth	
Table	
Girdle	

	Pointed	EXCELLENT	EXCELLENT	NONE
Culet				
Polish				
Symmetry				
Fluorescence				

Comments:
This Laboratory Grown Diamond was created by Chemical Vapor Deposition (CVD) growth process.