

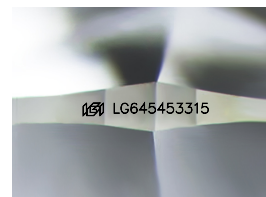
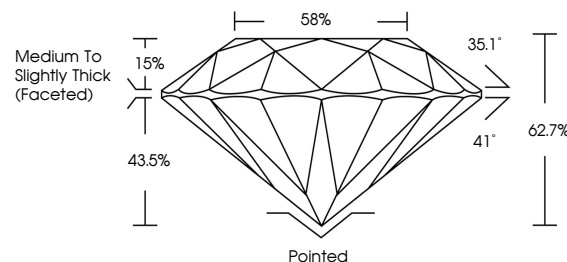


ELECTRONIC COPY

LABORATORY GROWN DIAMOND REPORT

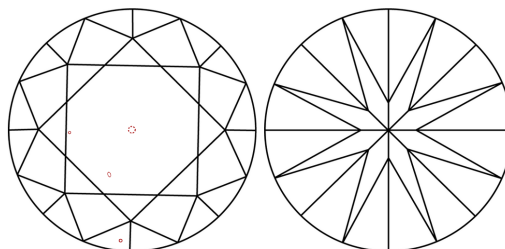
LG645453315
Report verification at lgi.org

PROPORTIONS



Sample Image Used

CLARITY CHARACTERISTICS



KEY TO SYMBOLS

Red symbols indicate internal characteristics.
Green symbols indicate external characteristics.

COLOR

D E F G H I J Faint Very Light Light

CLARITY

| IF | VVS ^{1,2} | VS ^{1,2} | SI ^{1,2} | I ^{1,3} |
|---------------------|-----------------------------|------------------------|-------------------|------------------|
| Internally Flawless | Very Very Slightly Included | Very Slightly Included | Slightly Included | Included |



© IGI 2020, International Gemological Institute

FD - 10 20

www.igi.org

LABORATORY GROWN DIAMOND REPORT



July 27, 2024

IGI Report Number **LG645453315**Description **LABORATORY GROWN DIAMOND**Shape and Cutting Style **ROUND BRILLIANT**

| | |
|--------------|-----------------------|
| Measurements | 8.71 - 8.67 X 5.44 MM |
|--------------|-----------------------|

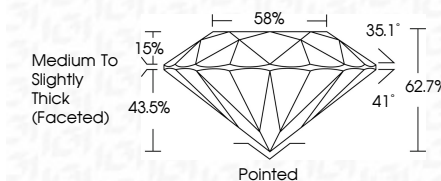
GRADING RESULTS

Carat Weight **2.57 CARATS**

Color Grade F

Clarity Grade SI 1

Cut Grade **EXCELLENT**



ADDITIONAL GRADING INFORMATION

Polish **EXCELLENCE**Symmetry **EXCELLEN**

Fluorescence NONI

Inscription(s) **113** LG645453315

Comments: This Laboratory Grown Diamond was created by Chemical Vapor Deposition (CVD) growth process.
Type IIa



July 27, 2024
IGI Report No LG645453315
ROUND BRILLIANT

| | | |
|-----------------------|---------------|------------------------------------|
| 3.71 - 8.57 X 5.41 MM | Carat Weight | 2.57 CARATS |
| | Color Grade | F |
| | Clarity Grade | S11 |
| | Cut Grade | EXCELLENT |
| | Depth | 62.7% |
| | Table | 58% |
| | Girdle | Medium to Slightly Thick (faceted) |
| | Culet | Pointed |
| | Polish | EXCELLENT |
| | Symmetry | EXCELLENT |
| | Fluorescence | NONE |

Comments:
This Laboratory Grown Diamond was created by Chemical Vapor Deposition (CVD) growth process.