

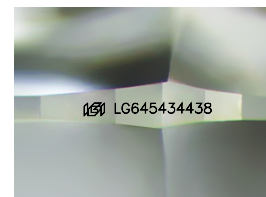
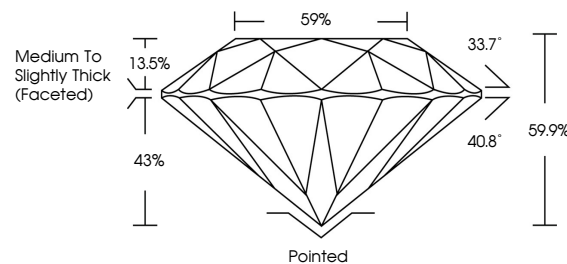


ELECTRONIC COPY

LABORATORY GROWN DIAMOND REPORT

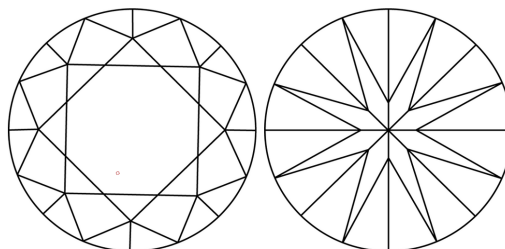
LG645434438
Report verification at igi.org

PROPORTIONS



Sample Image Used

CLARITY CHARACTERISTICS



KEY TO SYMBOLS

Red symbols indicate internal characteristics.
Green symbols indicate external characteristics.

COLOR

D E F G H I J Faint Very Light Light

CLARITY

IF	VVS ¹⁻²	VS ¹⁻²	SI ¹⁻²	I ¹⁻³
Internally Flawless	Very Very Slightly Included	Very Slightly Included	Slightly Included	Included



© IGI 2020, International Gemological Institute

FD - 10 20

www.igi.org

LABORATORY GROWN DIAMOND REPORT



August 3, 2024

IGI Report Number **LG645434438**

Description **LABORATORY GROWN DIAMOND**Shape and Cutting Style **ROUND BRILLIANT**

Measurements 7.35 - 7.36 X 4.41 MM

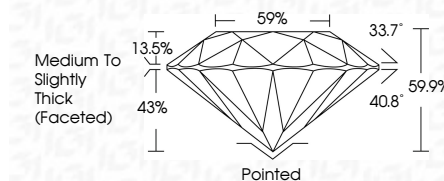
GRADING RESULTS

Carat Weight **1.46 CARAT**

Color Grade	F
-------------	---

Clarity Grade VVS 2

Cut Grade **IDEAL**



ADDITIONAL GRADING INFORMATION

Polish **EXCELLENT**Symmetry **EXCELLENT**Fluorescence **NONE**Inscription(s)  LG645434438

Comments: This Laboratory Grown Diamond was created by Chemical Vapor Deposition (CVD) growth process.
Type IIa



August 3, 2024	1.46 CARAT
GI Report No. LG45648438	VVS 2
ROUND BRILLIANT	IDEAL
	691%
	89%
	Medium to Slightly Thick (Faceted)
	Polished
	EXCELLENT
	B'CELENT
	NONE
	1691 LG45648438

Comments:
 This is a Natural, Fancy Cut, Round, Brilliant Cut, Colorless, Very Slightly Included (VVS2) Diamond was created by Chemical Vapor Deposition (CVD) growth process.
 Type IIa