



**ELECTRONIC COPY**

## LABORATORY GROWN DIAMOND REPORT

July 31, 2024	
IGI Report Number	LG645421957
Description	LABORATORY GROWN DIAMOND
Shape and Cutting Style	ROUND BRILLIANT
Measurements	9.25 - 9.29 X 5.82 MM

## GRADING RESULTS

Carat Weight	3.07 CARATS
Color Grade	G
Clarity Grade	SI 1
Cut Grade	EXCELLENT

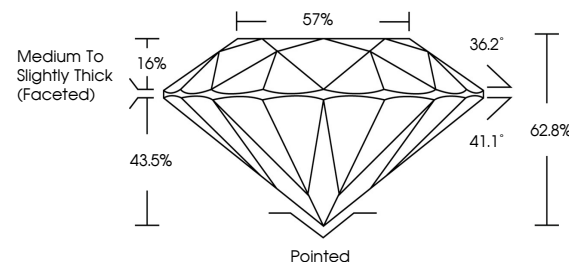
### ADDITIONAL GRADING INFORMATION

Polish	EXCELLENT
Symmetry	EXCELLENT
Fluorescence	NONE
Inscription(s)	15 LG645421957

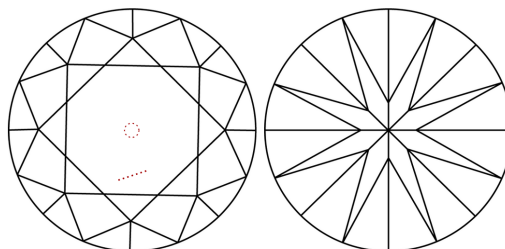
Comments: This Laboratory Grown Diamond was created by Chemical Vapor Deposition (CVD) growth process.  
Type IIa

LG645421957  
Report verification at lqi.org

## PROPORTIONS

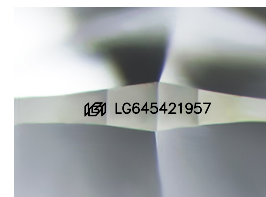


## CLARITY CHARACTERISTICS



## KEY TO SYMBOLS

Red symbols indicate internal characteristics.  
Green symbols indicate external characteristics.



Sample Image Used

**COLOR**

D E F G H I J Faint Very Light Light

## CLARITY

IF	VVS <sup>1,2</sup>	VS <sup>1,2</sup>	SI <sup>1,2</sup>	I <sup>1,3</sup>
Internally Flawless	Very Very Slightly Included	Very Slightly Included	Slightly Included	Included



© IGI 2020, International Gemological Institute

FD - 10 20

**www.igi.org**

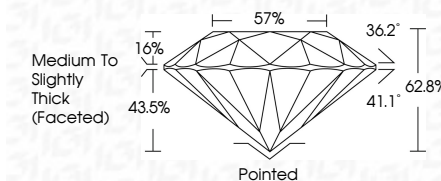
## LABORATORY GROWN DIAMOND REPORT



July 31, 2024	
IGI Report Number	LG645421957
Description	LABORATORY GROWN DIAMOND
Shape and Cutting Style	ROUND BRILLIANT
Measurements	9.25 - 9.29 X 5.82 MM

## GRADING RESULTS

Carat Weight	3.07 CARATS
Color Grade	G
Clarity Grade	SI 1
Cut Grade	EXCELLENT



### ADDITIONAL GRADING INFORMATION

Polish	EXCELLENT
Symmetry	EXCELLENT
Fluorescence	NONE
Inscription(s)	<del>(15)</del> LG645421957
<p>Comments: This Laboratory Grown Diamond was created by Chemical Vapor Deposition (CVD) growth process.</p> <p>Type IIa</p>	



July 31, 2024  
GI Report No LG645421957  
ROUND BRILLIANT

2.25 - 9.25 X 5.82 MM	3.07 CARATS	G	\$11	EXCELLENT	62.9%	57%	Medium to Slightly Thick (Faceted)	Pointed	EXCELLENT	EXCELLENT	NONE
	Carat Weight	Color Grade	Clarity Grade	Cut Grade	Depth	Table	Girdle	Culet	Polish	Symmetry	Fluorescence

**Comments:**  
This Laboratory Grown Diamond was  
created by Chemical Vapor Deposition  
(CVD) growth process.