

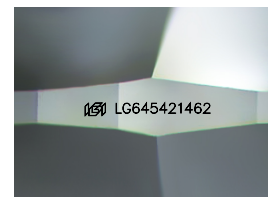
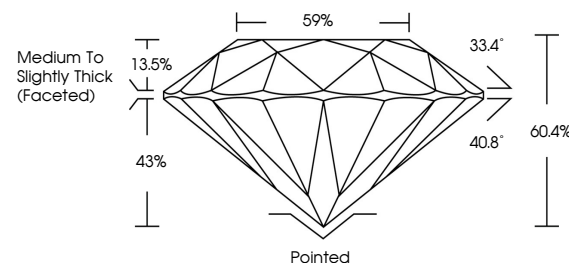


ELECTRONIC COPY

LABORATORY GROWN DIAMOND REPORT

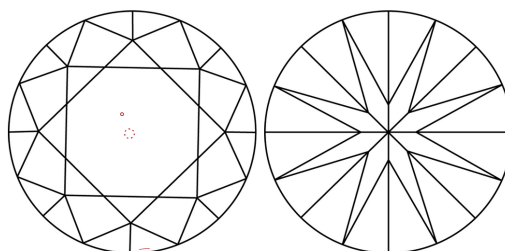
LG645421462
Report verification at igi.org

PROPORTIONS



Sample Image Used

CLARITY CHARACTERISTICS



KEY TO SYMBOLS

Red symbols indicate internal characteristics.
Green symbols indicate external characteristics.

COLOR

D E F G H I J Faint Very Light Light

CLARITY

IF	VVS ¹⁻²	VS ¹⁻²	SI ¹⁻²	I ¹⁻³
Internally Flawless	Very Very Slightly Included	Very Slightly Included	Slightly Included	Included



© IGI 2020, International Gemological Institute

FD - 10 20

www.igi.org

LABORATORY GROWN DIAMOND REPORT



July 31, 2024

IGI Report Number **LG645421462**Description **LABORATORY GROWN DIAMOND**Shape and Cutting Style **ROUND BRILLIANT**

Measurements 8.06 - 8.06 X 4.87 MM

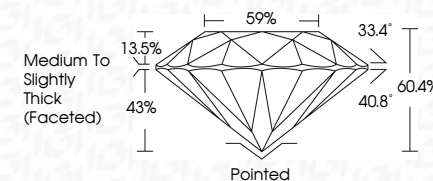
GRADING RESULTS

Carat Weight 1.96 CARAT

Color Grade F

Clarity Grade VS 1

Cut Grade **IDEAL**



ADDITIONAL GRADING INFORMATION

Polish **EXCELLENT**Symmetry **EXCELLENT**Fluorescence **NONE**Inscription(s) **13** LG645421462

Comments: This Laboratory Grown Diamond was created by Chemical Vapor Deposition (CVD) growth process.
Type IIa



July 31, 2024	GI Report No. LG45621462	1.9X CARAT	
ROUND BRILLIANT	0.05 - 8.05 X 4.87 MM	F	
Color Weight		VS 1	
Color Grade		IDEAL	
Clarity Grade		60.4%	
Cut Grade		59%	
Depth		Medium to Slightly	
Table		Thick (Faceted)	
Girdle			
Culet		Pointed	
Polish		EXCELLENT	
Symmetry		EXCELLENT	
Fluorescence		NONE	
Inscriptions(s)		lg9 LG45621462	
Comments:	The Laboratory Grown Diamond was found to be a natural Vapor Deposition (VD) growth process. Type Iia		