



**ELECTRONIC COPY**

## LABORATORY GROWN DIAMOND REPORT

July 31, 2024	
IGI Report Number	LG645406490
Description	LABORATORY GROWN DIAMOND
Shape and Cutting Style	CUSHION BRILLIANT
Measurements	8.41 X 6.07 X 4.03 MM

## GRADING RESULTS

Carat Weight	1.57 CARAT
Color Grade	E
Clarity Grade	VS 1

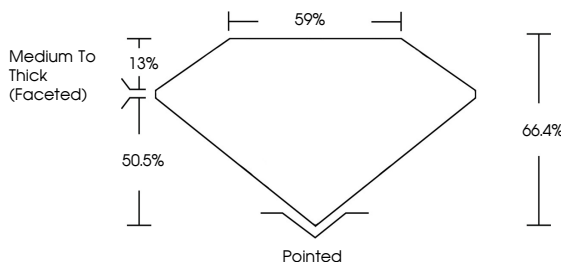
### ADDITIONAL GRADING INFORMATION

Polish	EXCELLENT
Symmetry	EXCELLENT
Fluorescence	NONE
Inscription(s)	15 LG645406490

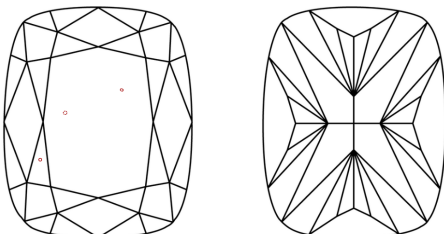
Comments: This Laboratory Grown Diamond was created by Chemical Vapor Deposition (CVD) growth process.  
Type IIa

LG645406490  
Report verification at [igi.org](https://igi.org)

## PROPORTIONS

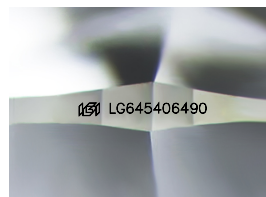


## CLARITY CHARACTERISTICS



## KEY TO SYMBOLS

Red symbols indicate internal characteristics.  
Green symbols indicate external characteristics.



Sample Image Used

## COLOR

D E F G H I J Faint Very Light Light

## CLARITY

IF	WS <sup>1-2</sup>	VS <sup>1-2</sup>	SI <sup>1-2</sup>	I <sup>1-3</sup>
Internally Flawless	Very Very Slightly Included	Very Slightly Included	Slightly Included	Included



© IGI 2020, International Gemological Institute

FD - 10 20

**www.igi.org**

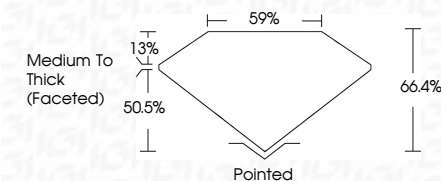
## LABORATORY GROWN DIAMOND REPORT



July 31, 2024	
IGI Report Number	LG645406490
Description	LABORATORY GROWN DIAMOND
Shape and Cutting Style	CUSHION BRILLIANT
Measurements	8.41 X 6.07 X 4.03 MM

## GRADING RESULTS

Carat Weight	1.57 CARAT
Color Grade	E
Clarity Grade	VS 1



### ADDITIONAL GRADING INFORMATION

Polish	EXCELLENT
Symmetry	EXCELLENT
Fluorescence	NONE
Inscription(s)	 LG645406490
Comments: This Laboratory Grown Diamond was created by Chemical Vapor Deposition (CVD) growth process.	
Type IIa	



IG

July 31, 2024  
GI Report No LG645406490  
CUSHION BRILLIANT

3.41 X 6.07 X 4.03 MM	1.57 CARAT	E	VS 1	66.4%	59%	Medium to Thick (graded)	Pointed	EXCELLENT	EXCELLENT	NONE	None (Graded)
Color Grade	Clarity Grade	Depth	Table	Girdle	Polish	Symmetry	Fluorescence				

Comments:  
This Laboratory Grown Diamond was  
created by Chemical Vapor Deposition  
(CVD) growth process.