

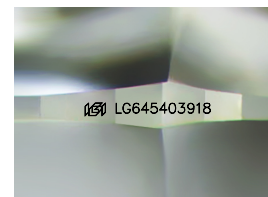
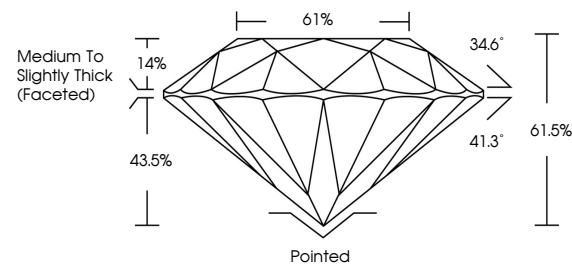


ELECTRONIC COPY

LABORATORY GROWN DIAMOND REPORT

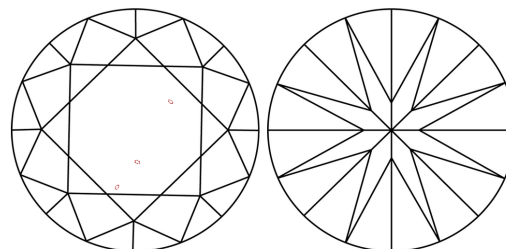
LG645403918
Report verification at igi.org

PROPORTIONS



Sample Image Used

CLARITY CHARACTERISTICS



KEY TO SYMBOLS

Red symbols indicate internal characteristics.
Green symbols indicate external characteristics.

COLOR

D E F G H I J Faint Very Light Light

CLARITY

IF	VVS ^{1,2}	VS ^{1,2}	SI ^{1,2}	I ^{1,3}
Internally Flawless	Very Very Slightly Included	Very Slightly Included	Slightly Included	Included



© IGI 2020, International Gemological Institute

FD - 10 20

www.igi.org

LABORATORY GROWN DIAMOND REPORT



August 2, 2024

IGI Report Number **LG645403918**

Description **LABORATORY GROWN DIAMOND**Shape and Cutting Style **ROUND BRILLIANT**

Measurements 6.59 - 6.57 X 4.04 MM

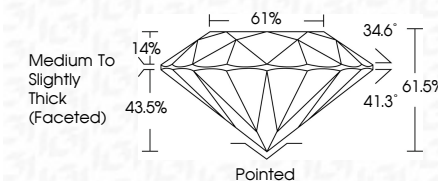
GRADING RESULTS

Carat Weight **1.08 CARAT**

Color Grade	D
-------------	---

Clarity Grade VS 1

Cut Grade **EXCELLENT**



ADDITIONAL GRADING INFORMATION

Polish **EXCELLENT**Symmetry **EXCELLENT**Fluorescence **NONE**Inscription(s) LG645403918

Comments: This Laboratory Grown Diamond was created by Chemical Vapor Deposition (CVD) growth process.
Type IIa



August 2, 2024	GI Report No.UG4640918	1.06 CARAT	Vs 1	Medium to Slightly Thick (Faceted)	Pointed	NONE (No USG4640918)	Comments: Created by Crown Diamond usa Graded by Chemical Vapor Deposition (CVD) growth process. Type IIa
ROUND BRILLIANT	5.59 - 4.57 X 4.04 MM	Color Grade	EXCELLENT		EXCELLENT		
		Clarity Grade	61.5%		EXCELLENT		
		Cut Grade	61%		EXCELLENT		
		Depth					
		Table					
		Girdle					
					Quiet		
					Polish		
					Symmetry		
					Fluorescence		
					Inscription(s)		