

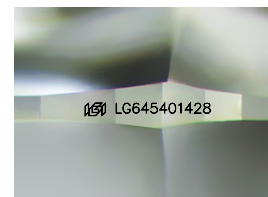
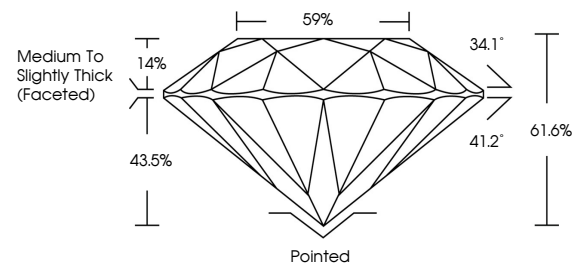


**ELECTRONIC COPY**

## LABORATORY GROWN DIAMOND REPORT

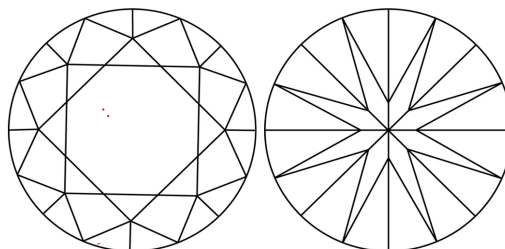
LG645401428  
Report verification at [igi.org](https://igi.org)

## PROPORTIONS



Sample Image Used

## CLARITY CHARACTERISTICS



## KEY TO SYMBOLS

Red symbols indicate internal characteristics.  
Green symbols indicate external characteristics.

## COLOR

D E F G H I J Faint Very Light Light

## CLARITY

IF	VVS <sup>1,2</sup>	VS <sup>1,2</sup>	SI <sup>1,2</sup>	I <sup>1,3</sup>
Internally Flawless	Very Very Slightly Included	Very Slightly Included	Slightly Included	Included



© IGI 2020, International Gemological Institute

FD - 10 20

**www.igi.org**

## LABORATORY GROWN DIAMOND REPORT



July 30, 2024

IGI Report Number **LG645401428**Description **LABORATORY GROWN DIAMOND**Shape and Cutting Style **ROUND BRILLIANT**

Measurements 6.52 - 6.55 X 4.02 MM

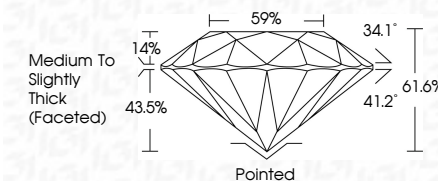
## GRADING RESULTS

Carat Weight **1.06 CARAT**

Color Grade	D
-------------	---

Clarity Grade VS 1

Cut Grade **IDEAL**



### ADDITIONAL GRADING INFORMATION

Polish **EXCELLENT**Symmetry **EXCELLENT**Fluorescence **NONE**Inscription(s)  LG645401428

Comments: This Laboratory Grown Diamond was created by Chemical Vapor Deposition (CVD) growth process.  
Type IIa

[illegible]