



ELECTRONIC COPY

LABORATORY GROWN DIAMOND REPORT

July 22, 2024	
IGI Report Number	LG644497186
Description	LABORATORY GROWN DIAMOND
Shape and Cutting Style	CUSHION BRILLIANT
Measurements	10.16 X 7.58 X 5.04 MM

GRADING RESULTS

Carat Weight	3.10 CARATS
Color Grade	E
Clarity Grade	SI 1

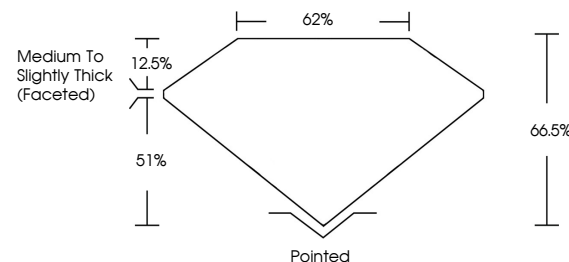
ADDITIONAL GRADING INFORMATION

Polish	EXCELLENT
Symmetry	EXCELLENT
Fluorescence	NONE
Inscription(s)	15 LG644497186

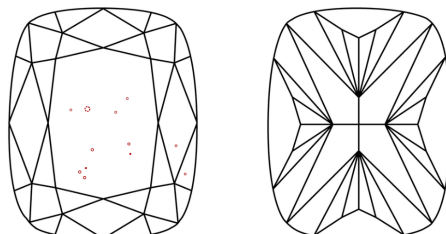
Comments: This Laboratory Grown Diamond was created by Chemical Vapor Deposition (CVD) growth process.
Type IIa

LG644497186
Report verification at lgi.org

PROPORTIONS

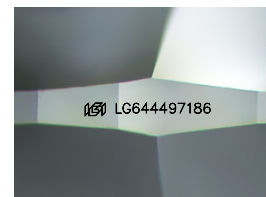


CLARITY CHARACTERISTICS



KEY TO SYMBOLS

Red symbols indicate internal characteristics.
Green symbols indicate external characteristics.



Sample Image Used

COLOR

D E F G H I J Faint Very Light Light

CLARITY

IF	VVS ¹⁻²	VS ¹⁻²	SI ¹⁻²	I ¹⁻³
Internally Flawless	Very Very Slightly Included	Very Slightly Included	Slightly Included	Included



© IGI 2020, International Gemological Institute

FD - 10 20

www.igi.org

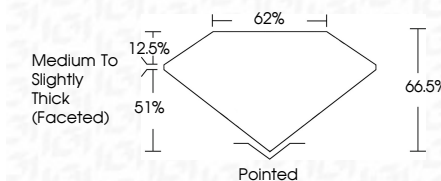
LABORATORY GROWN DIAMOND REPORT



July 22, 2024	
IGI Report Number	LG644497186
Description	LABORATORY GROWN DIAMOND
Shape and Cutting Style	CUSHION BRILLIANT
Measurements	10.16 X 7.58 X 5.04 MM

GRADING RESULTS

Carat Weight	3.10 CARATS
Color Grade	E
Clarity Grade	SI 1



ADDITIONAL GRADING INFORMATION

Polish	EXCELLENT
Symmetry	EXCELLENT
Fluorescence	NONE
Inscription(s)	 LG644497186

Comments: This Laboratory Grown Diamond was created by Chemical Vapor Deposition (CVD) growth process.
Type IIa



July 22, 2024
GI Report No LG64497186
CUSHION BRILLIANT

CUSHION BRILLIANT	10.16 X 7.55 X 5.04 MM	3.10 CARATS		E	SI 1	66.6%	62%	Medium To Slightly Thick (faceted)	Pointed	EXCELLENT	EXCELLENT	NONE	Serial: C5444627104			
		Carat Weight	Color Grade													
CUSHION BRILLIANT	10.16 X 7.55 X 5.04 MM	Clarity Grade	Depth	Table	Grade	Culet	Polish	Symmetry	Fluorescence							

Comments:
This Laboratory Grown Diamond was
created by Chemical Vapor Deposition
(CVD) growth process.