



ELECTRONIC COPY

LABORATORY GROWN DIAMOND REPORT

July 23, 2024	
IGI Report Number	LG644496925
Description	LABORATORY GROWN DIAMOND
Shape and Cutting Style	CUT CORNERED RECTANGULAR MODIFIED BRILLIANT
Measurements	9.52 X 6.54 X 4.40 MM

GRADING RESULTS

Carat Weight	2.40 CARATS
Color Grade	E
Clarity Grade	VS 2

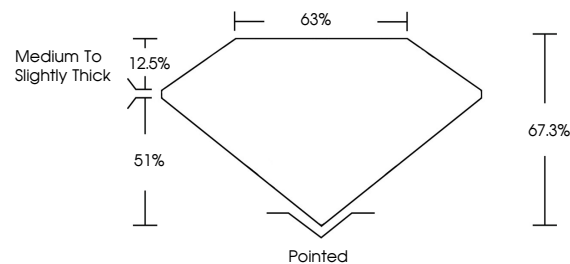
ADDITIONAL GRADING INFORMATION

Polish	EXCELLENT
Symmetry	EXCELLENT
Fluorescence	NONE
Inscription(s)	 LG644496925

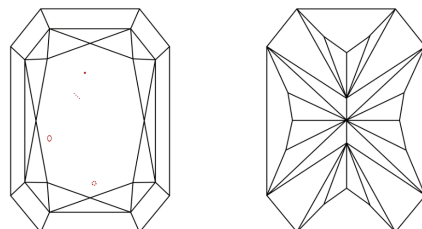
Comments: This Laboratory Grown Diamond was created by Chemical Vapor Deposition (CVD) growth process.
Type IIa

LG644496925
Report verification at igi.org

PROPORTIONS

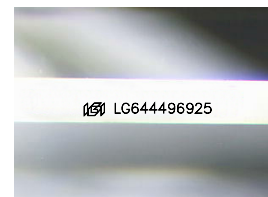


CLARITY CHARACTERISTICS



KEY TO SYMBOLS

Red symbols indicate internal characteristics.
Green symbols indicate external characteristics.



Sample Image Used

COLOR

D E F G H I J Faint Very Light Light

CLARITY

IF	VVS ¹⁻²	VS ¹⁻²	SI ¹⁻²	I ¹⁻³
Internally Flawless	Very Very Slightly Included	Very Slightly Included	Slightly Included	Included



© IGI 2020, International Gemological Institute

FD - 10 20

www.igi.org

LABORATORY GROWN DIAMOND REPORT



July 23, 2024

IGI Report Number **LG644496925**

Description	LABORATORY GROWN DIAMOND
-------------	--------------------------

Shape and Cutting Style

CUT CORNERED
RECTANGULAR MODIFIED
BRILLIANT

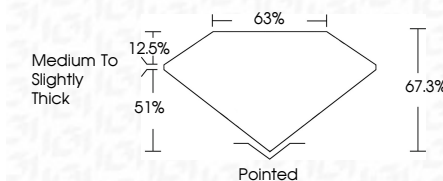
Measurements **9.52 X 6.54 X 4.40 MM**

GRADING RESULTS

Carat Weight **2.40 CARATS**

Color Grade	E
-------------	---

Clarity Grade VS 2



ADDITIONAL GRADING INFORMATION

Polish **EXCELLENCE**Symmetry **EXCELLEN**

Fluorescence NONI

Inscription(s) LG644496925

Comments: This Laboratory Grown Diamond was created by Chemical Vapor Deposition (CVD) growth process.
Type IIa



July 23, 2024	Lab Report No. LG54469925	OUT CORNERED RECT. MODIFIED BRILLIANT
2.62 X 6.54 X 4.40 MM	Carat Weight	2.40 CARATS
	Color Grade	E
	Clarity Grade	VS 2
	Depth	67.3%
	Table	63%
	Grade	Medium To Slightly Thick
	Culet	Pointed
	Polish	EXCELLENT
	Symmetry	EXCELLENT
	Fluorescence	NONE
	Inscription(s)	681 LG54469925

Comments:
 This Laboratory Grown Diamond was
 created by Chemical Vapor Deposition
 growth process.
 Type IIc