

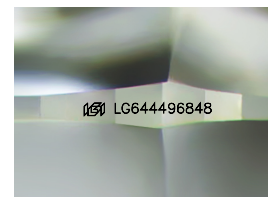
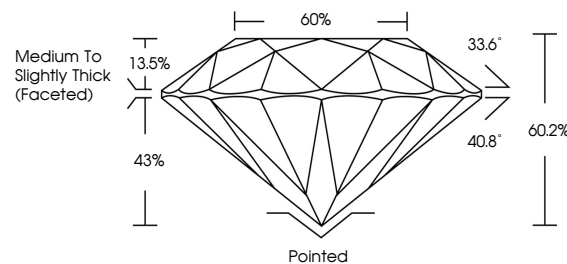


ELECTRONIC COPY

LABORATORY GROWN DIAMOND REPORT

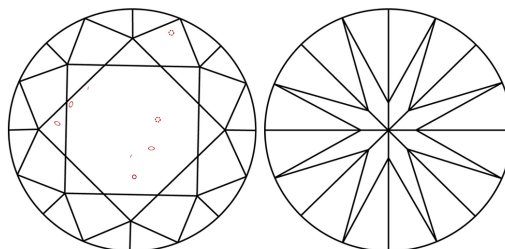
LG644496848
Report verification at lgi.org

PROPORTIONS



Sample Image Used

CLARITY CHARACTERISTICS



KEY TO SYMBOLS

Red symbols indicate internal characteristics.
Green symbols indicate external characteristics.

COLOR

D E F G H I J Faint Very Light Light

CLARITY

IF	VVS ¹⁻²	VS ¹⁻²	SI ¹⁻²	I ¹⁻³
Internally Flawless	Very Very Slightly Included	Very Slightly Included	Slightly Included	Included



© IGI 2020, International Gemological Institute

FD - 10 20

www.igi.org

LABORATORY GROWN DIAMOND REPORT



July 23, 2024

IGI Report Number **LG644496848**Description **LABORATORY GROWN DIAMOND**Shape and Cutting Style **ROUND BRILLIANT**

Measurements 7.31 - 7.34 X 4.42 MM

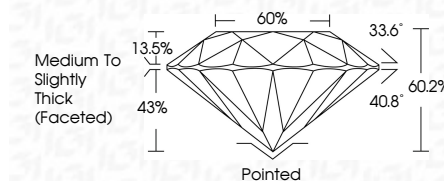
GRADING RESULTS

Carat Weight 1.47 CARAT

Color Grade

Clarity Grade SI 1

Cut Grade **IDEAL**



ADDITIONAL GRADING INFORMATION

Polish **EXCELLENT**Symmetry **EXCELLENT**Fluorescence **NONE**Inscription(s) LG644496848

Comments: This Laboratory Grown Diamond was created by Chemical Vapor Deposition (CVD) growth process.
Type IIa



July 23, 2024
GI Report No LG644496848
ROUND BRILLIANT

3.91 - 7.34 X 4.42 MM	Carat Weight	1.47 CARAT
	Color Grade	E
	Clarity Grade	S11
	Cut Grade	IDPA1
	Depth	60.2%
	Table	60%
	Grade	Medium to Slightly Thick (Faceted)
	Culet	Pointed
	Polish	EXCELLENT
	Symmetry	EXCELLENT
	Fluorescence	NONE
	Fluorescence Color	None / Greenish

Comments:
This Laboratory Grown Diamond was created by Chemical Vapor Deposition (CVD) growth process.