

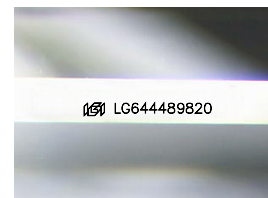
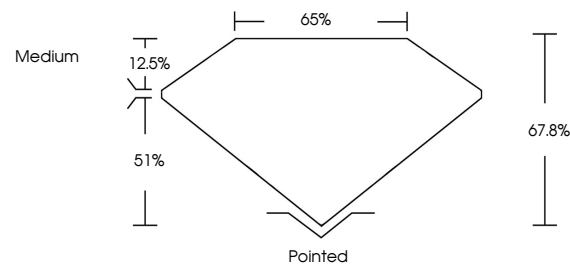


ELECTRONIC COPY

LABORATORY GROWN DIAMOND REPORT

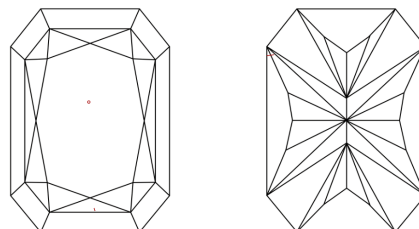
LG644489820
Report verification at igi.org

PROPORTIONS



Sample Image Used

CLARITY CHARACTERISTICS



KEY TO SYMBOLS

Red symbols indicate internal characteristics.
Green symbols indicate external characteristics.

COLOR

D E F G H I J Faint Very Light Light

CLARITY

IF	VVS ¹⁻²	VS ¹⁻²	SI ¹⁻²	I ¹⁻³
Internally Flawless	Very Very Slightly Included	Very Slightly Included	Slightly Included	Included



© IGI 2020, International Gemological Institute

FD - 10 20

www.igi.org

LABORATORY GROWN DIAMOND REPORT



July 19, 2024

IGI Report Number **LG644489820**Description **LABORATORY GROWN DIAMOND**

Shape and Cutting Style

CUT CORNERED
RECTANGULAR MODIFIED
BRILLIANT

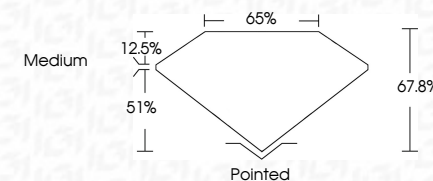
Measurements 9.01 X 6.25 X 4.24 MM

GRADING RESULTS

Carat Weight **2.05 CARATS**

Color Grade E

Clarity Grade VS 1



ADDITIONAL GRADING INFORMATION

Polish EXCELLENT

Symmetry **EXCELLENT**Fluorescence **NONE**Inscription(s) LG644489820

Comments: This Laboratory Grown Diamond was created by Chemical Vapor Deposition (CVD) growth process.
Type IIa



July 19, 2024	GI Report No. LG644489820	2.05 CARATS	E
CUT CORNERED RECT. MODIFIED BRILLIANT	Color Weight	VS 1	
0.01 X 0.25 X 0.24 MM	Color Grade	67.8%	
	Clarity Grade	65%	
	Depth	Medium	
	Table		
	Girdle		
	Quiet	Pointed	
	Polish	EXCELLENT	
	Symmetry	EXCELLENT	
	Fluorescence	NONE	
	Inscriptions(s)	LG644489820	

Comments:
 The Laboratory Grown Diamond was
 created by Chemical Vapor Deposition
 (CVD) growth process.
 type IIa