

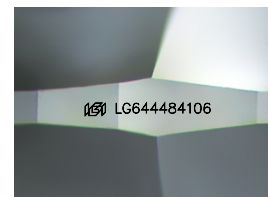
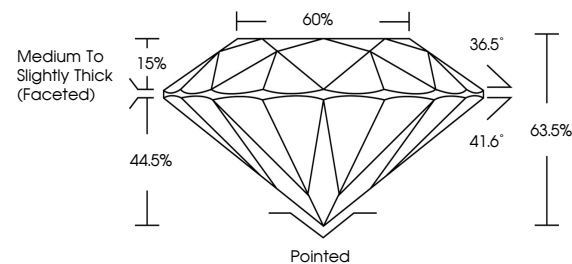


**ELECTRONIC COPY**

## LABORATORY GROWN DIAMOND REPORT

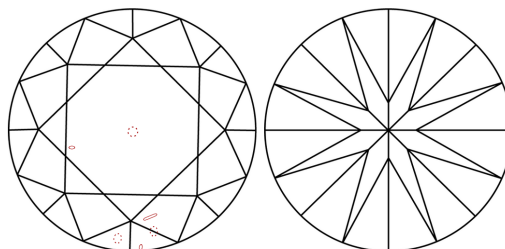
LG644484106  
Report verification at [igi.org](https://igi.org)

## PROPORTIONS



Sample Image Used

## CLARITY CHARACTERISTICS



## KEY TO SYMBOLS

Red symbols indicate internal characteristics.  
Green symbols indicate external characteristics.

**COLOR**

D E F G H I J Faint Very Light Light

## CLARITY

IF	VVS <sup>1-2</sup>	VS <sup>1-2</sup>	SI <sup>1-2</sup>	I <sup>1-3</sup>
Internally Flawless	Very Very Slightly Included	Very Slightly Included	Slightly Included	Included



© IGI 2020, International Gemological Institute

FD - 10 20

**www.igi.org**

## LABORATORY GROWN DIAMOND REPORT



July 18, 2024

IGI Report Number **LG644484106**Description **LABORATORY GROWN DIAMOND**Shape and Cutting Style **ROUND BRILLIANT**

Measurements 9.05 - 9.09 X 5.76 MM

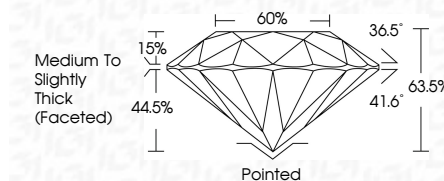
## GRADING RESULTS

Carat Weight **2.97 CARATS**

Color Grade	E
-------------	---

Clarity Grade VS 2

Cut Grade **EXCELLENT**



### ADDITIONAL GRADING INFORMATION

Polish **EXCELLENT**Symmetry **EXCELLENT**Fluorescence **NONE**Inscription(s)  LG644484100

Comments: This Laboratory Grown Diamond was created by Chemical Vapor Deposition (CVD) growth process.  
Type IIa



July 18, 2024  
GI Report No LG644484106  
ROUND BRILLIANT

9.05 - 9.09 X 5.75 MM	2.97 CARATS	VS 2	Pointed
Carat Weight	EXCELLENT	63.05%	EXCELLENT
Color Grade		60%	EXCELLENT
Clarity Grade		Medium to Slightly Thick (Faceted)	NONE
Cut Grade			
Depth			
Table			
Girdle			
Culet			
Polish			
Symmetry			
Fluorescence			

**Comments:**  
This Laboratory Grown Diamond was created by Chemical Vapor Deposition (CVD) growth process.