



**ELECTRONIC COPY**

LG644475148  
Report verification at igi.org



July 17, 2024

IGI Report Number **LG644475148**

Description **LABORATORY GROWN DIAMOND**

Shape and Cutting Style **CUSHION BRILLIANT**

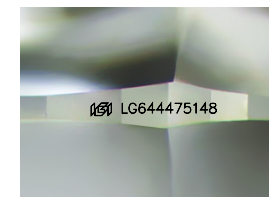
Measurements **8.14 X 5.84 X 3.95 MM**

**GRADING RESULTS**

Carat Weight **1.51 CARAT**

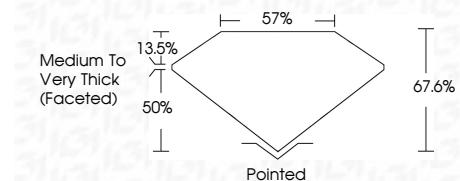
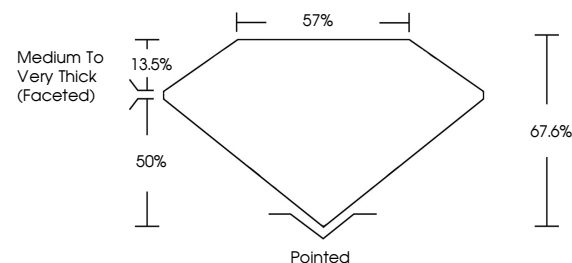
Color Grade **E**

Clarity Grade **VVS 2**

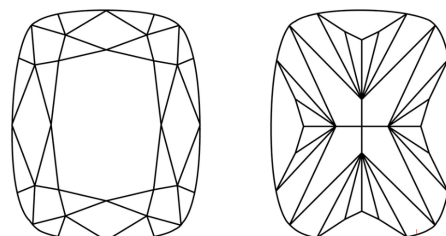


Sample Image Used

**PROPORTIONS**



**CLARITY CHARACTERISTICS**



**KEY TO SYMBOLS**

Red symbols indicate internal characteristics.  
Green symbols indicate external characteristics.

**COLOR**

D E F G H I J Faint Very Light Light

**CLARITY**

IF	VS <sup>1-2</sup>	VS <sup>1-2</sup>	SI <sup>1-2</sup>	I <sup>1-3</sup>
Internally Flawless	Very Very Slightly Included	Very Slightly Included	Slightly Included	Included

**ADDITIONAL GRADING INFORMATION**

Polish **EXCELLENT**

Symmetry **EXCELLENT**

Fluorescence **NONE**

Inscription(s) **IGI LG644475148**

Comments: This Laboratory Grown Diamond was created by Chemical Vapor Deposition (CVD) growth process. Type IIa



**IGI**



July 17, 2024  
IGI Report No LG644475148  
**CUSHION BRILLIANT**  
8.14 X 5.84 X 3.95 MM  
1.51 CARAT  
E  
VVS 2  
67.6%  
57%  
Medium to Very Thick (Faceted)  
Pointed  
EXCELLENT  
EXCELLENT  
NONE  
IGI LG644475148  
Comments: This Laboratory Grown Diamond was created by Chemical Vapor Deposition (CVD) growth process. Type IIa

July 17, 2024  
IGI Report Number **LG644475148**  
Description **LABORATORY GROWN DIAMOND**  
Shape and Cutting Style **CUSHION BRILLIANT**  
Measurements **8.14 X 5.84 X 3.95 MM**  
**GRADING RESULTS**  
Carat Weight **1.51 CARAT**  
Color Grade **E**  
Clarity Grade **VVS 2**  
**ADDITIONAL GRADING INFORMATION**  
Polish **EXCELLENT**  
Symmetry **EXCELLENT**  
Fluorescence **NONE**  
Inscription(s) **IGI LG644475148**  
Comments: This Laboratory Grown Diamond was created by Chemical Vapor Deposition (CVD) growth process. Type IIa