



ELECTRONIC COPY

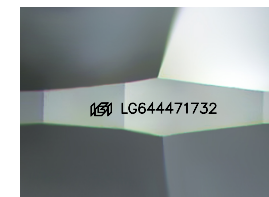
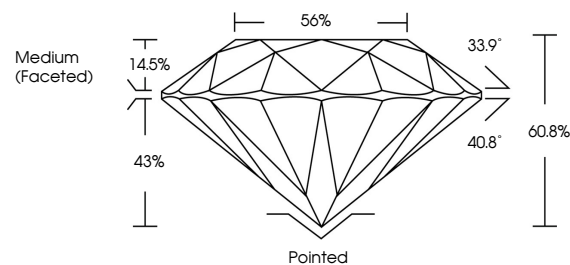
LG644471732
Report verification at igi.org



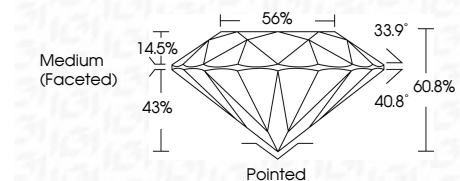
July 18, 2024
IGI Report Number LG644471732
Description LABORATORY GROWN DIAMOND
Shape and Cutting Style ROUND BRILLIANT
Measurements 8.02 - 8.02 X 4.88 MM
GRADING RESULTS
Carat Weight 1.91 CARAT
Color Grade F
Clarity Grade VS 1
Cut Grade IDEAL

July 18, 2024
IGI Report Number LG644471732
Description LABORATORY GROWN DIAMOND
Shape and Cutting Style ROUND BRILLIANT
Measurements 8.02 - 8.02 X 4.88 MM

PROPORTIONS



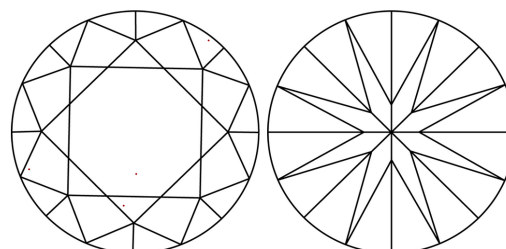
Sample Image Used



GRADING RESULTS

Carat Weight 1.91 CARAT
Color Grade F
Clarity Grade VS 1
Cut Grade IDEAL

CLARITY CHARACTERISTICS



KEY TO SYMBOLS

Red symbols indicate internal characteristics.
Green symbols indicate external characteristics.

ADDITIONAL GRADING INFORMATION

Polish EXCELLENT
Symmetry EXCELLENT
Fluorescence NONE
Inscription(s) IGI LG644471732

ADDITIONAL GRADING INFORMATION

Polish EXCELLENT
Symmetry EXCELLENT
Fluorescence NONE
Inscription(s) IGI LG644471732
Comments: This Laboratory Grown Diamond was created by Chemical Vapor Deposition (CVD) growth process. Type IIa

COLOR

D E F G H I J Faint Very Light Light

CLARITY

IF VS 1-2 VS 1-2 SI 1-2 I 1-3
Internally Flawless Very Very Slightly Included Very Slightly Included Slightly Included Included



July 18, 2024
IGI Report No LG644471732
ROUND BRILLIANT
8.02 - 8.02 X 4.88 MM
1.91 CARAT F
Color Grade VS 1 IDEAL
Clarity Grade 60.0% 56%
Depth 60.0%
Table 56%
Medium (Faceted)
Cutler Pointed
Polish EXCELLENT
Symmetry EXCELLENT
Fluorescence NONE
Inscriptions(s) IGI LG644471732
Comments: This Laboratory Grown Diamond was created by Chemical Vapor Deposition (CVD) growth process. Type IIa