

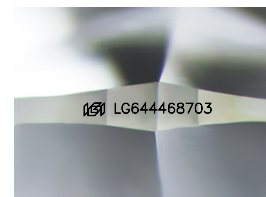
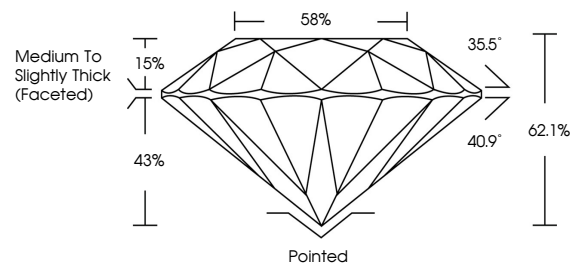


**ELECTRONIC COPY**

## LABORATORY GROWN DIAMOND REPORT

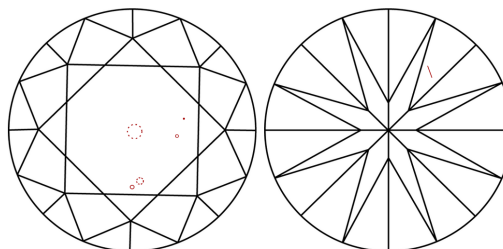
LG644468703  
Report verification at [lgi.org](https://lgi.org)

## PROPORTIONS



Sample Image Used

## CLARITY CHARACTERISTICS



## KEY TO SYMBOLS

Red symbols indicate internal characteristics.  
Green symbols indicate external characteristics.

## COLOR

D E F G H I J Faint Very Light Light

## CLARITY

| IF                  | VVS <sup>1-2</sup>          | VS <sup>1-2</sup>      | SI <sup>1-2</sup> | I <sup>1-3</sup> |
|---------------------|-----------------------------|------------------------|-------------------|------------------|
| Internally Flawless | Very Very Slightly Included | Very Slightly Included | Slightly Included | Included         |



© IGI 2020, International Gemological Institute

FD - 10 20

**www.igi.org**

## LABORATORY GROWN DIAMOND REPORT



July 18, 2024

IGI Report Number **LG644468703**Description **LABORATORY GROWN DIAMOND**Shape and Cutting Style **ROUND BRILLIANT**

Measurements 9.91 - 9.99 X 6.18 MM

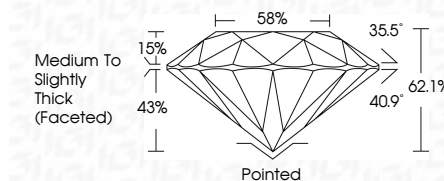
## GRADING RESULTS

Carat Weight **3.80 CARATS**

Color Grade F

Clarity Grade VS 2

Cut Grade **IDEAL**



### ADDITIONAL GRADING INFORMATION

Polish **EXCELLENT**Symmetry **EXCELLENT**Fluorescence **NONE**Inscription(s)  LG644468703

Comments: This Laboratory Grown Diamond was created by Chemical Vapor Deposition (CVD) growth process.  
Type IIa



July 18, 2024  
GI Report No LG64468703  
ROUND BRILLIANT

|                       |                                    |
|-----------------------|------------------------------------|
| 9.91 - 9.99 X & 18 MM | 3.80 CARATS                        |
| Carat Weight          | F                                  |
| Color Grade           | VS 2                               |
| Clarity Grade         | IDEAL                              |
| Cut Grade             | 62.1%                              |
| Depth                 | 58%                                |
| Table                 | Medium to Slightly Thick (Faceted) |
| Grade                 |                                    |
| Culet                 | Pointed                            |
| Polish                | EXCELLENT                          |
| Symmetry              | EXCELLENT                          |
| Fluorescence          | NONE                               |

**Comments:**  
This Laboratory Grown Diamond was  
created by Chemical Vapor Deposition  
(CVD) growth process.