

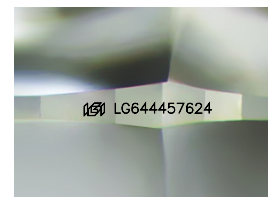
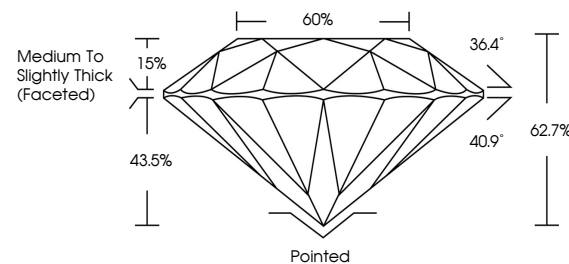


ELECTRONIC COPY

LABORATORY GROWN DIAMOND REPORT

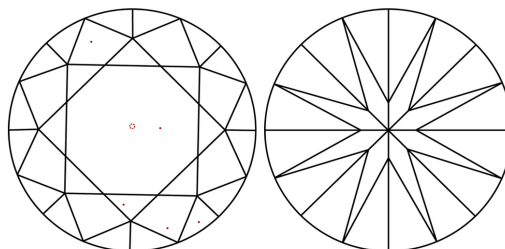
LG644457624
Report verification at igi.org

PROPORTIONS



Sample Image Used

CLARITY CHARACTERISTICS



KEY TO SYMBOLS

Red symbols indicate internal characteristics.
Green symbols indicate external characteristics.

COLOR

D E F G H I J Faint Very Light Light

CLARITY

IF	VVS ^{1,2}	VS ^{1,2}	SI ^{1,2}	I ^{1,3}
Internally Flawless	Very Very Slightly Included	Very Slightly Included	Slightly Included	Included



© IGI 2020, International Gemological Institute

FD - 10 20

www.igi.org

LABORATORY GROWN DIAMOND REPORT



July 16, 2024

IGI Report Number **LG644457624**Description **LABORATORY GROWN DIAMOND**Shape and Cutting Style **ROUND BRILLIANT**

Measurements 9.10 - 9.08 X 5.69 MM

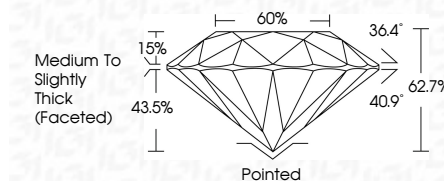
GRADING RESULTS

Carat Weight **2.96 CARATS**

Color Grade F

Clarity Grade **VS 2**

Cut Grade **EXCELLENT**



ADDITIONAL GRADING INFORMATION

Polish **EXCELLENT**Symmetry **EXCELLENT**Fluorescence **NONE**Inscription(s) LG644457624

Comments: This Laboratory Grown Diamond was created by Chemical Vapor Deposition (CVD) growth process.
Type IIa



July 16, 2024
GI Report No LG644457624
ROUND BRILLIANT

12.10 - 9.03 X 5.69 MM	2% CARATS	VVS 2	Pointed
Carat Weight	EXCELLENT	62.7%	EXCELLENT
Color Grade		60%	EXCELLENT
Clarity Grade		Medium To Slightly Thick (Faceted)	NONE
Cut Grade			
Depth			
Table			
Girdle			
Culet			
Polish			
Symmetry			
Fluorescence			

Comments:
This Laboratory Grown Diamond was
created by Chemical Vapor Deposition
(CVD) growth process.