



ELECTRONIC COPY

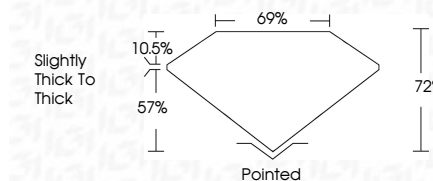
LG644436765 Report verification at igi.org



July 23, 2024 IGI Report Number LG644436765 Description LABORATORY GROWN DIAMOND Shape and Cutting Style PRINCESS CUT Measurements 7.78 X 7.67 X 5.52 MM

GRADING RESULTS

Carat Weight 2.88 CARATS Color Grade F Clarity Grade VS 1



ADDITIONAL GRADING INFORMATION

Polish EXCELLENT Symmetry EXCELLENT Fluorescence NONE Inscription(s) LG644436765 Comments: This Laboratory Grown Diamond was created by Chemical Vapor Deposition (CVD) growth process. Type IIa



July 23, 2024 IGI Report No LG644436765 PRINCESS CUT 2.88 CARATS F VS 1 72% 69% Slightly thick to thick Pointed EXCELLENT EXCELLENT NONE NONE LG644436765

Comments: This Laboratory Grown Diamond was created by Chemical Vapor Deposition (CVD) growth process. Type IIa

LABORATORY GROWN DIAMOND REPORT

July 23, 2024 IGI Report Number LG644436765 Description LABORATORY GROWN DIAMOND Shape and Cutting Style PRINCESS CUT Measurements 7.78 X 7.67 X 5.52 MM

GRADING RESULTS

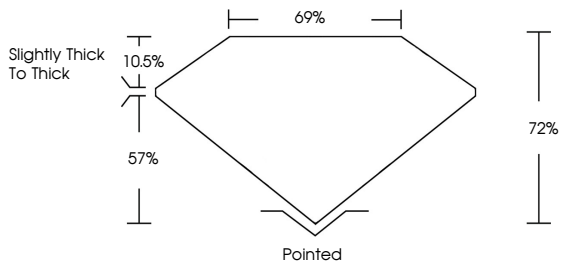
Carat Weight 2.88 CARATS Color Grade F Clarity Grade VS 1

ADDITIONAL GRADING INFORMATION

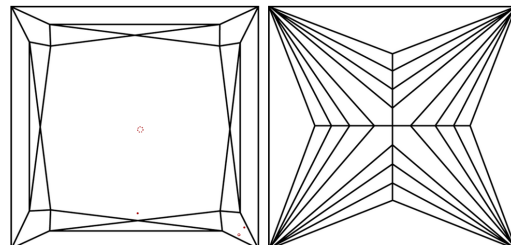
Polish EXCELLENT Symmetry EXCELLENT Fluorescence NONE Inscription(s) LG644436765

Comments: This Laboratory Grown Diamond was created by Chemical Vapor Deposition (CVD) growth process. Type IIa

PROPORTIONS

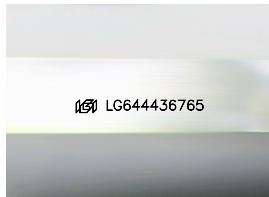


CLARITY CHARACTERISTICS



KEY TO SYMBOLS

Red symbols indicate internal characteristics. Green symbols indicate external characteristics.



Sample Image Used

COLOR

D E F G H I J Faint Very Light Light

CLARITY

IF VS 1-2 VS 1-2 SI 1-2 I 1-3 Internally Flawless Very Very Slightly Included Very Slightly Included Slightly Included Included

