



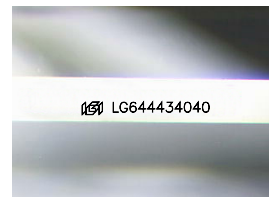
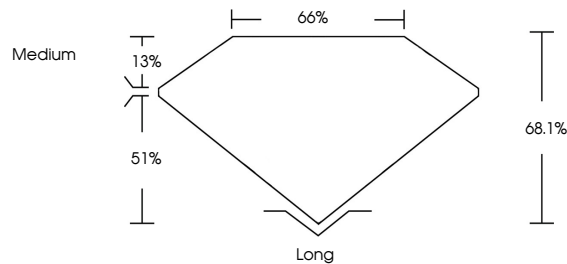
**INTERNATIONAL
GEMOLOGICAL
INSTITUTE**

ELECTRONIC COPY

LABORATORY GROWN DIAMOND REPORT

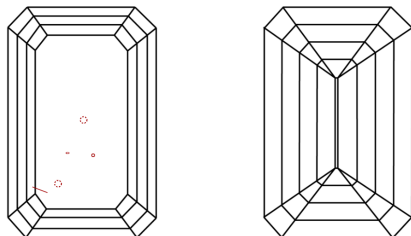
LG644434040
Report verification at igi.org

PROPORTIONS



Sample Image Used

CLARITY CHARACTERISTICS



KEY TO SYMBOLS

Red symbols indicate internal characteristics.
Green symbols indicate external characteristics.

COLOR



CLARITY



© IGI 2020, International Gemological Institute

FD - 10 20

www.igi.org

LABORATORY GROWN DIAMOND REPORT



July 23, 2024

IGI Report Number **LG644434040**

Description	LABORATORY GROWN DIAMOND
-------------	--------------------------

Shape and Cutting Style **EMERALD CUT**

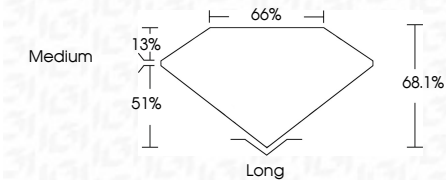
Measurements **8.23 X 5.77 X 3.93 MM**

GRADING RESULTS

Carat Weight **1.81 CARAT**

Color Grade **D**

Clarity Grade VS 2



ADDITIONAL GRADING INFORMATION

Polish **EXCELLENT**Symmetry **EXCELLENT**Fluorescence **NONE**Inscription(s) LG64443404

Comments: This Laboratory Grown Diamond was created by Chemical Vapor Deposition (CVD) growth process.
Type IIa



IG

July 23, 2024
 IGI Report No LG644434040

IGI Report No. GS44434040	1.81 CARAT
EMERALD CUT	D
4.23 X 5.77 X 3.93 MM	VS 2
Carat Weight	68.1%
Color Grade	66%
Clarity Grade	Medium
Depth	Long
Table	EXCELLENT
Girdle	EXCELLENT
Culet	NONE
Polish	EXCELLENT
Symmetry	EXCELLENT
Fluorescence	None
Inscriptions	IGI GS44434040

Comments:
This Laboratory Grown Diamond was created by Chemical Vapor Deposition (CVD) growth process.