

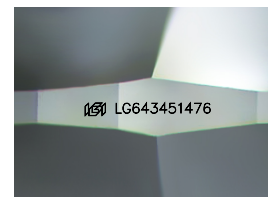
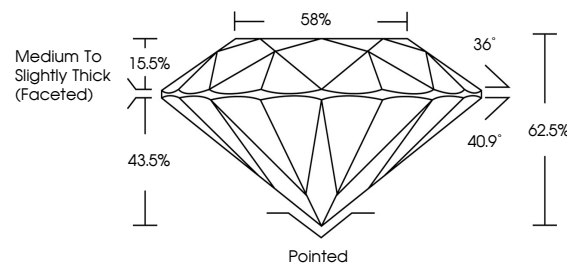


ELECTRONIC COPY

LABORATORY GROWN DIAMOND REPORT

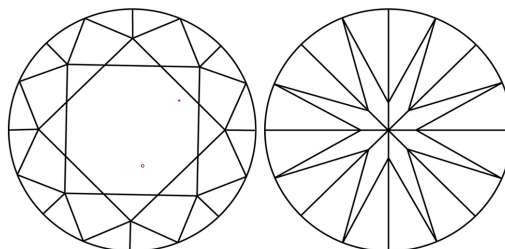
LG643451476
Report verification at igi.org

PROPORTIONS



Sample Image Used

CLARITY CHARACTERISTICS



KEY TO SYMBOLS

Red symbols indicate internal characteristics.
Green symbols indicate external characteristics.

COLOR

D E F G H I J Faint Very Light Light

CLARITY

IF	VVS ¹⁻²	VS ¹⁻²	SI ¹⁻²	I ¹⁻³
Internally Flawless	Very Very Slightly Included	Very Slightly Included	Slightly Included	Included



© IGI 2020, International Gemological Institute

FD - 10 20

www.igi.org

LABORATORY GROWN DIAMOND REPORT



July 16, 2024

IGI Report Number **LG643451476**Description **LABORATORY GROWN DIAMOND**Shape and Cutting Style **ROUND BRILLIANT**

Measurements 9.66 - 9.73 X 6.07 MM

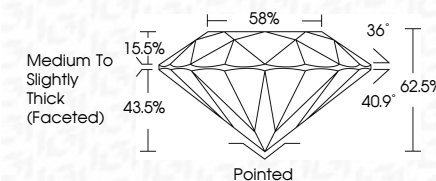
GRADING RESULTS

Carat Weight **3.54 CARATS**

Color Grade	F
-------------	---

Clarity Grade VS 1

Cut Grade **IDEAL**



ADDITIONAL GRADING INFORMATION

Polish **EXCELLENT**Symmetry **EXCELLENT**Fluorescence **NONE**Inscription(s) LG643451476

Comments: This Laboratory Grown Diamond was created by Chemical Vapor Deposition (CVD) growth process.
Type IIa



July 16, 2024
GI Report No LG643451476
ROUND BRILLIANT

9.66 - 9.73 X 4.07 MM	3.64 CARATS	
Carat Weight	VS 1	Pointed
Color Grade	IDEAL	EXCELLENT
Clarity Grade	62.0%	EXCELLENT
Cut Grade	58%	NONE
Depth	Medium to Slightly Thick (Faceted)	
Table		
Girdle		
Culet		
Polish		
Symmetry		
Fluorescence		

Comments:
This Laboratory Grown Diamond was created by Chemical Vapor Deposition (CVD) growth process.