

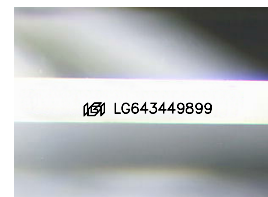
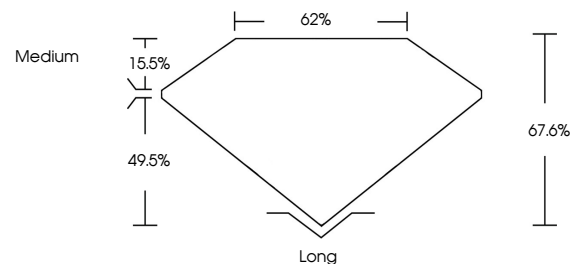


ELECTRONIC COPY

LABORATORY GROWN DIAMOND REPORT

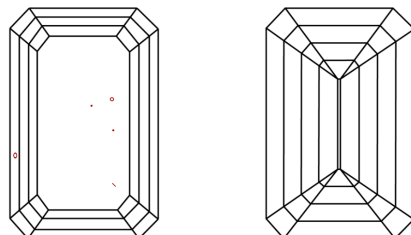
LG643449899
Report verification at igi.org

PROPORTIONS



Sample Image Used

CLARITY CHARACTERISTICS



KEY TO SYMBOLS

Red symbols indicate internal characteristics.
Green symbols indicate external characteristics.

COLOR

D E F G H I J Faint Very Light Light

CLARITY

IF	VVS ¹⁻²	VS ¹⁻²	SI ¹⁻²	I ¹⁻³
Internally Flawless	Very Very Slightly Included	Very Slightly Included	Slightly Included	Included



© IGI 2020, International Gemological Institute

FD - 10 20

www.igi.org

LABORATORY GROWN DIAMOND REPORT



July 16, 2024

IGI Report Number **LG643449899**Description **LABORATORY GROWN DIAMOND**Shape and Cutting Style **EMERALD CUT**

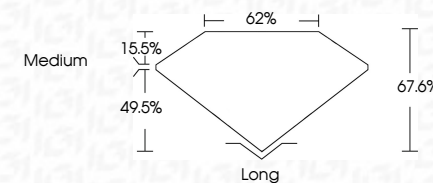
Measurements 8.46 X 6.15 X 4.16 MM

GRADING RESULTS

Carat Weight **2.09 CARATS**

Color Grade G

Clarity Grade VS 2



ADDITIONAL GRADING INFORMATION

Polish **EXCELLENT**Symmetry **EXCELLENT**Fluorescence **NONE**Inscription(s)  LG643449899

Comments: This Laboratory Grown Diamond was created by Chemical Vapor Deposition (CVD) growth process.
Type IIa



July 16, 2024
GI Report No LG643449899

3.45 X 6.15 X 4.16 MM	Carat Weight	2.09 CARATS
	Color Grade	G
	Clarity Grade	VS 2
	Depth	67.6%
	Table	62%
	Grade	Medium
	Culet	Long
	Polish	EXCELLENT
	Symmetry	EXCELLENT
	Fluorescence	NONE
	Report #	6456140000

Comments:
This Laboratory Grown Diamond was created by Chemical Vapor Deposition (CVD) growth process.