



**ELECTRONIC COPY**

## LABORATORY GROWN DIAMOND REPORT

July 15, 2024	
IGI Report Number	LG643449099
Description	LABORATORY GROWN DIAMOND
Shape and Cutting Style	CUT CORNERED RECTANGULAR MODIFIED BRILLIANT
Measurements	9.10 X 6.27 X 4.23 MM

## GRADING RESULTS

Carat Weight	2.05 CARATS
Color Grade	E
Clarity Grade	VS 1

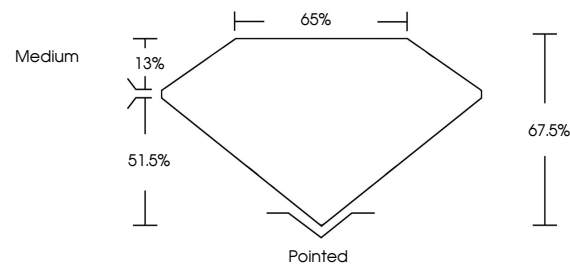
### ADDITIONAL GRADING INFORMATION

Polish	EXCELLENT
Symmetry	EXCELLENT
Fluorescence	NONE
Inscription(s)	 LG643449099

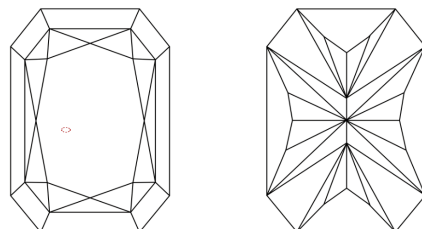
Comments: This Laboratory Grown Diamond was created by Chemical Vapor Deposition (CVD) growth process.  
Type IIa

LG643449099  
Report verification at [igi.org](https://igi.org)

## PROPORTIONS

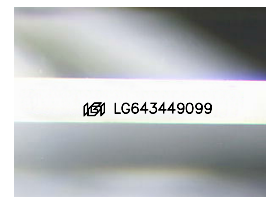


## CLARITY CHARACTERISTICS



## KEY TO SYMBOLS

Red symbols indicate internal characteristics.  
Green symbols indicate external characteristics.



Sample Image Used

## COLOR

D E F G H I J Faint Very Light Light

## CLARITY

IF	VVS <sup>1-2</sup>	VS <sup>1-2</sup>	SI <sup>1-2</sup>	I <sup>1-3</sup>
Internally Flawless	Very Very Slightly Included	Very Slightly Included	Slightly Included	Included



© IGI 2020, International Gemological Institute

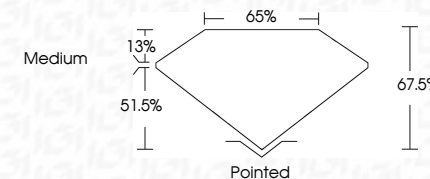
FD - 10 20

**www.igi.org**

## LABORATORY GROWN DIAMOND REPORT



July 15, 2024	
IGI Report Number	LG643449099
Description	LABORATORY GROWN DIAMOND
Shape and Cutting Style	CUT CORNERED RECTANGULAR MODIFIED BRILLIANT
Measurements	9.10 X 6.27 X 4.23 MM
<b>GRADING RESULTS</b>	
Carat Weight	2.05 CARATS
Color Grade	E
Clarity Grade	VS 1



### ADDITIONAL GRADING INFORMATION

Polish	EXCELLENT
Symmetry	EXCELLENT
Fluorescence	NONE
Inscription(s)	 LG643449099
<p>Comments: This Laboratory Grown Diamond was created by Chemical Vapor Deposition (CVD) growth process.</p> <p>Type IIa</p>	



IG

July 15, 2024	
GI REPORT NO LG4349099	
GI CORNERED RECT. MODIFIED BRILLIANT	
10.10 X 4.27 X 4.23 MM	
Carat Weight	2.05 CARATS
Color Grade	E
Clarity Grade	VS 1
Depth	67.5%
Table	65%
Gra	Medium
Culet	Pointed
Polish	EXCELLENT
Symmetry	EXCELLENT
Fluorescence	NONE
Inscription(s)	IGI LG4349099
Comments:	
The Laboratory Grown Diamond was CVD grown by Vapor Deposition type IIG	