



INTERNATIONAL GEMOLOGICAL INSTITUTE

ELECTRONIC COPY

LG643441121



July 15, 2024

IGI Report Number LG643441121

ROUND BRILLIANT

LABORATORY GROWN DIAMOND

6.24 - 6.26 X 3.92 MM

Carat Weight 0.96 CARAT

Color Grade E

Clarity Grade VS 1

Cut Grade EXCELLENT

Polish EXCELLENT

Symmetry EXCELLENT

Fluorescence NONE

Inscription(s) IGI LG643441121

Comments: This Laboratory Grown Diamond was created by Chemical Vapor Deposition (CVD) growth process. Type IIa

LABORATORY GROWN DIAMOND REPORT

July 15, 2024

IGI Report Number

LG643441121

Description

LABORATORY GROWN DIAMOND

Shape and Cutting Style

ROUND BRILLIANT

Measurements

6.24 - 6.26 X 3.92 MM

GRADING RESULTS

Carat Weight 0.96 CARAT

Color Grade E

Clarity Grade VS 1

Cut Grade EXCELLENT

ADDITIONAL GRADING INFORMATION

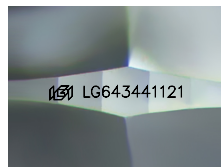
Polish EXCELLENT

Symmetry EXCELLENT

Fluorescence NONE

Inscription(s) IGI LG643441121

Comments: This Laboratory Grown Diamond was created by Chemical Vapor Deposition (CVD) growth process. Type IIa



Sample Image Used



July 15, 2024

IGI Report Number LG643441121

ROUND BRILLIANT

LABORATORY GROWN DIAMOND

6.24 - 6.26 X 3.92 MM

Carat Weight 0.96 CARAT

Color Grade E

Clarity Grade VS 1

Cut Grade EXCELLENT

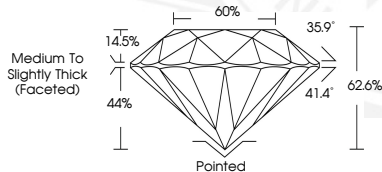
Polish EXCELLENT

Symmetry EXCELLENT

Fluorescence NONE

Inscription(s) IGI LG643441121

Comments: This Laboratory Grown Diamond was created by Chemical Vapor Deposition (CVD) growth process. Type IIa



THIS DOCUMENT WAS PRODUCED WITH THE FOLLOWING SECURITY MEASURES: SPECIAL DOCUMENT PAPER, INK SCREENS, WATERMARK BACKGROUND DESIGNS, HOLOGRAM AND OTHER SECURITY FEATURES NOT LISTED AND DO EXCEED DOCUMENT SECURITY INDUSTRY GUIDELINES.

For terms & conditions and to verify this report, please visit www.igi.org