



ELECTRONIC COPY

LABORATORY GROWN DIAMOND REPORT

July 16, 2024	
IGI Report Number	LG643441025
Description	LABORATORY GROWN DIAMOND
Shape and Cutting Style	ROUND BRILLIANT
Measurements	9.20 - 9.19 X 5.65 MM

GRADING RESULTS

Carat Weight	3.00 CARATS
Color Grade	G
Clarity Grade	VVS 2
Cut Grade	IDEAL

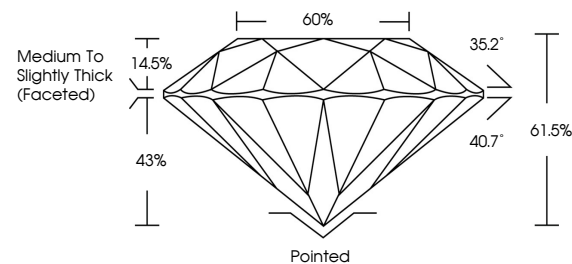
ADDITIONAL GRADING INFORMATION

Polish	EXCELLENT
Symmetry	EXCELLENT
Fluorescence	NONE
Inscription(s)	 LG643441025

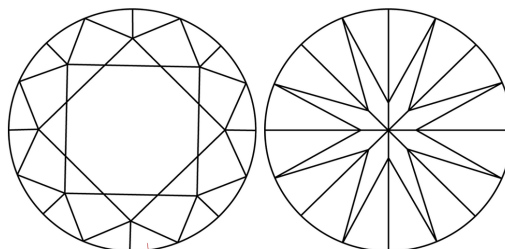
Comments: This Laboratory Grown Diamond was created by Chemical Vapor Deposition (CVD) growth process.
Type IIa

LG643441025
Report verification at igi.org

PROPORTIONS

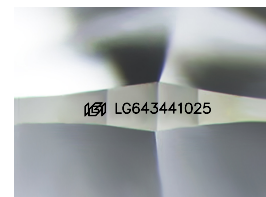


CLARITY CHARACTERISTICS



KEY TO SYMBOLS

Red symbols indicate internal characteristics.
Green symbols indicate external characteristics.



Sample Image Used

COLOR

D E F G H I J Faint Very Light Light

CLARITY

IF	VVS ¹⁻²	VS ¹⁻²	SI ¹⁻²	I ¹⁻³
Internally Flawless	Very Very Slightly Included	Very Slightly Included	Slightly Included	Included



© IGI 2020, International Gemological Institute

FD - 10 20

www.igi.org

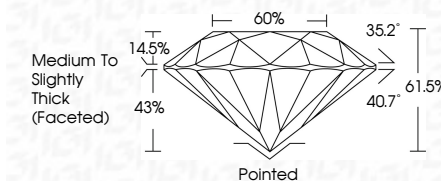
LABORATORY GROWN DIAMOND REPORT



July 16, 2024	
IGI Report Number	LG643441025
Description	LABORATORY GROWN DIAMOND
Shape and Cutting Style	ROUND BRILLIANT
Measurements	9.20 - 9.19 X 5.65 MM

GRADING RESULTS

Carat Weight	3.00 CARATS
Color Grade	G
Clarity Grade	VVS 2
Cut Grade	IDEAL



ADDITIONAL GRADING INFORMATION

Polish	EXCELLENT
Symmetry	EXCELLENT
Fluorescence	NONE
Inscription(s)	 LG6643441025
<p>Comments: This Laboratory Grown Diamond was created by Chemical Vapor Deposition (CVD) growth process.</p> <p>Type IIa</p>	



IG

July 16, 2024	3.00 CARATS	VVS 2	IDEAL	61.05%	60%	Medium to Slightly Thick (Faceted)	Polished	EXCELLENT	EXCELLENT	NONE	1691 LG543441025
ROUND BRILLIANT	Color Grade	Clarity Grade	Cut Grade	Depth	Table	Girdle	Culet	Pavil	Symmetry	Fluorescence	Inscriptions(s)
1.20 - 5.19 X 5.65 MM	Color Weight										
<p>Comments: Chemically Grown Diamond was treated by Chemical Vapor Deposition (CVD) growth process.</p> <p>Type IIA</p>											