



ELECTRONIC COPY

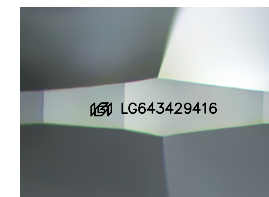
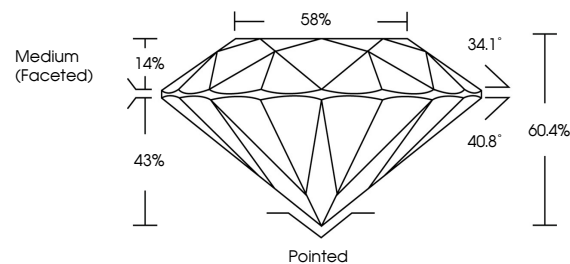
LG643429416
Report verification at igi.org



July 15, 2024
IGI Report Number LG643429416
Description LABORATORY GROWN DIAMOND
Shape and Cutting Style ROUND BRILLIANT
Measurements 7.19 - 7.18 X 4.34 MM
GRADING RESULTS
Carat Weight 1.37 CARAT
Color Grade G
Clarity Grade VVS 2
Cut Grade IDEAL

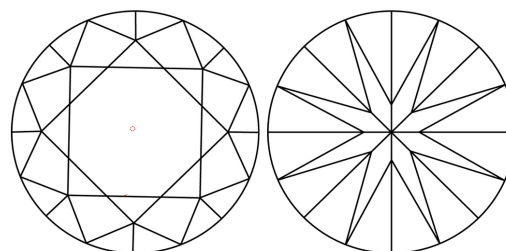
July 15, 2024
IGI Report Number LG643429416
Description LABORATORY GROWN DIAMOND
Shape and Cutting Style ROUND BRILLIANT
Measurements 7.19 - 7.18 X 4.34 MM

PROPORTIONS



Sample Image Used

CLARITY CHARACTERISTICS



KEY TO SYMBOLS

Red symbols indicate internal characteristics.
Green symbols indicate external characteristics.

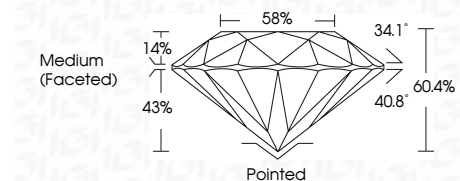
GRADING RESULTS

Carat Weight 1.37 CARAT
Color Grade G
Clarity Grade VVS 2
Cut Grade IDEAL

ADDITIONAL GRADING INFORMATION

Polish EXCELLENT
Symmetry EXCELLENT
Fluorescence NONE
Inscription(s) IGI LG643429416

Comments: This Laboratory Grown Diamond was created by Chemical Vapor Deposition (CVD) growth process. Type IIa



ADDITIONAL GRADING INFORMATION

Polish EXCELLENT
Symmetry EXCELLENT
Fluorescence NONE
Inscription(s) IGI LG643429416
Comments: This Laboratory Grown Diamond was created by Chemical Vapor Deposition (CVD) growth process. Type IIa

COLOR

D E F G H I J Faint Very Light Light

CLARITY

IF VVS 1-2 VS 1-2 SI 1-2 I 1-3
Internally Flawless Very Very Slightly Included Very Slightly Included Slightly Included Included



IGI



Table with 2 columns: Property and Value. Includes Carat Weight (1.37 CARAT), Color Grade (G), Clarity Grade (VVS 2), Cut Grade (IDEAL), Depth (60.4%), Table (58%), Girdle (Medium (Faceted)), Polish (EXCELLENT), Symmetry (EXCELLENT), Fluorescence (NONE), and Inscription(s) (IGI LG643429416).

Comments: This Laboratory Grown Diamond was created by Chemical Vapor Deposition (CVD) growth process. Type IIa